



ARF 14+ AGE 6+ch.

Miss ULTIMATE S 2.2m

New!
Lightweight structure
with all-wood airframe

2.2m Class

www.sebart-shop.com



Red / White scheme



SebArt 20Years scheme



Easy transport way

Wing Span: 86.61 in (2.200 mm)
Length (with spinner): 94.48 in (2.400 mm)
Wing Area: 16.895 sq in (109 dm²)
Weight 29.1 lb (13.2 kg)
Required radio: 8+ ch. with 8 HT MG digital servos
Electric motor: Hacker Q80-6L V2 kv180
ESC: SPIN 165 Pro OPTO
Battery: 2x Top Fuel ECO-X 5800 GS MTAG (12S)
Propeller: 28x12
Gas Engine: DA 100, DA 120, GP 123, 3W 110 CS.
Propeller: 28x10 / 29x10

step 01



Aileron hinges are factory preglued

step 02



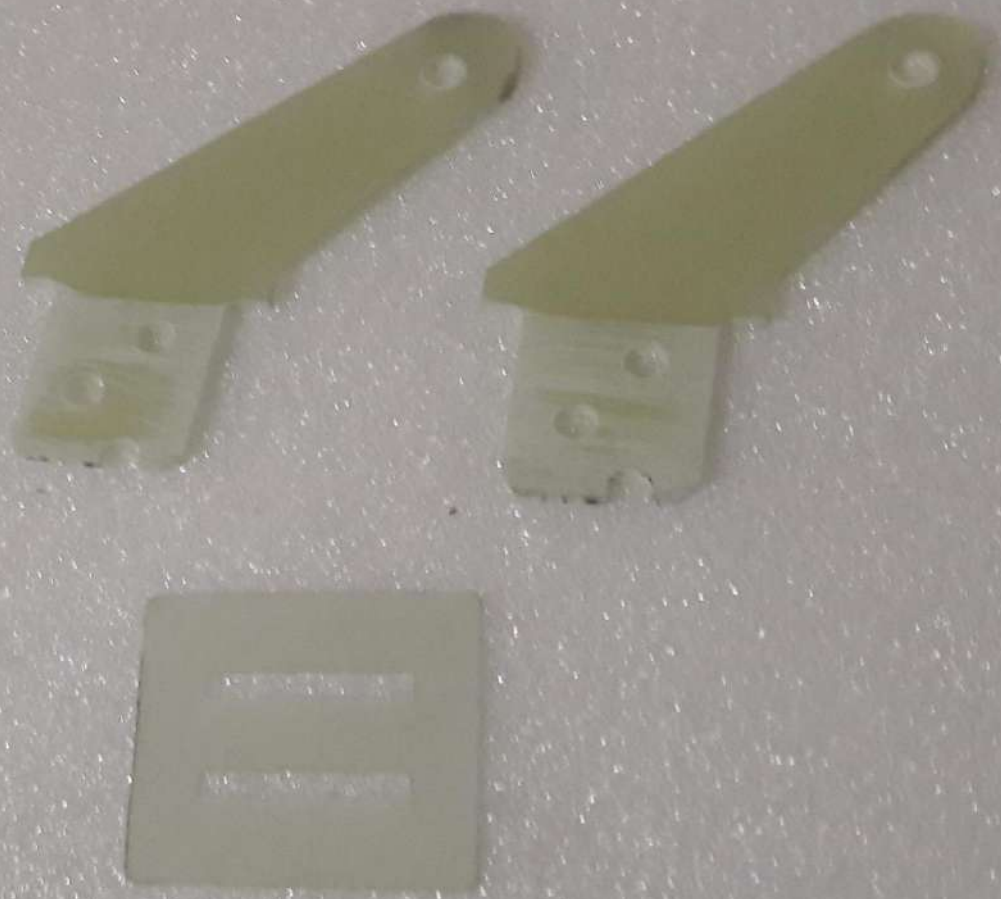
Aileron servo installation

step 03



Aileron servo installation

step 04



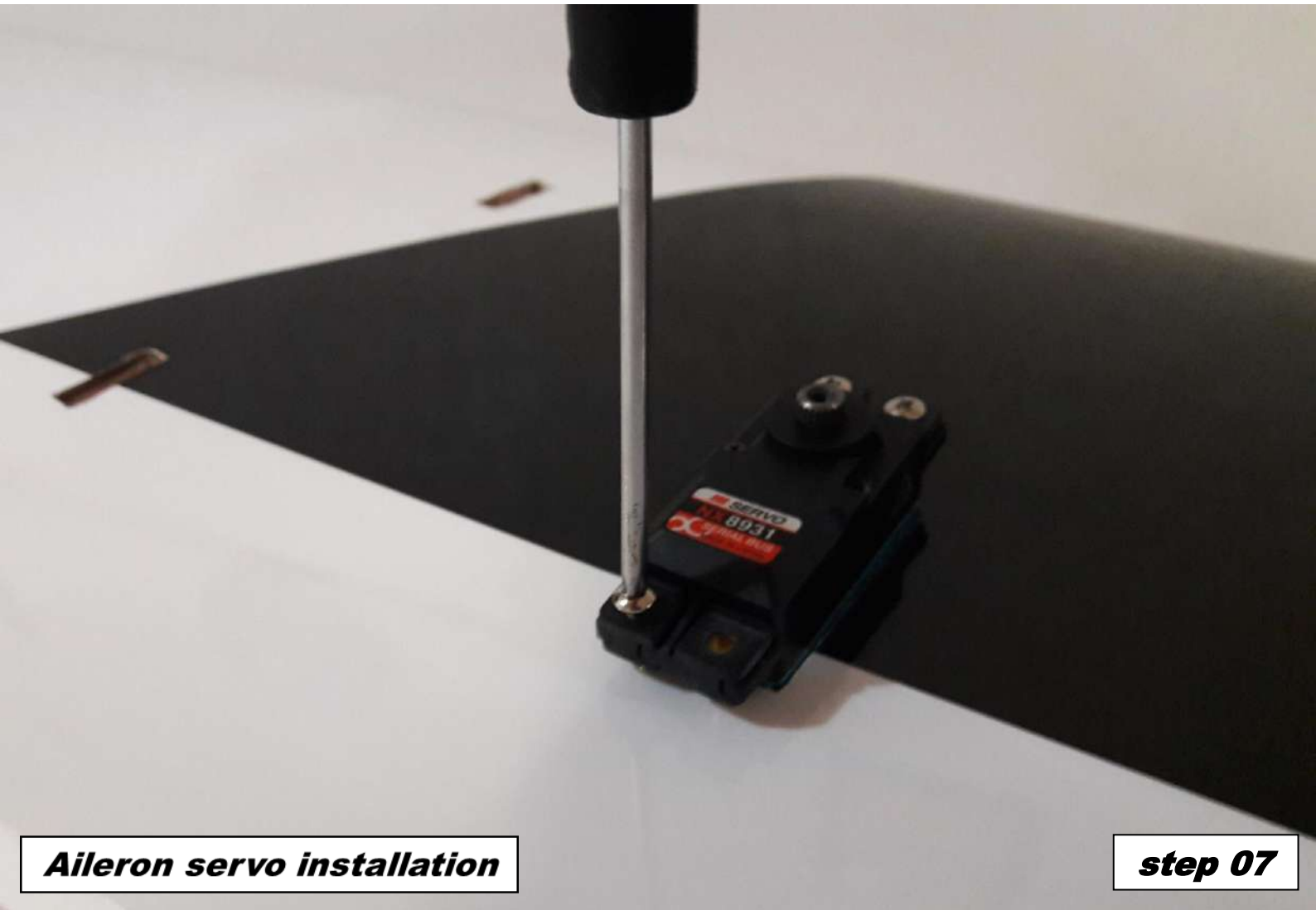
Aileron servo installation

step 05



Aileron servo installation

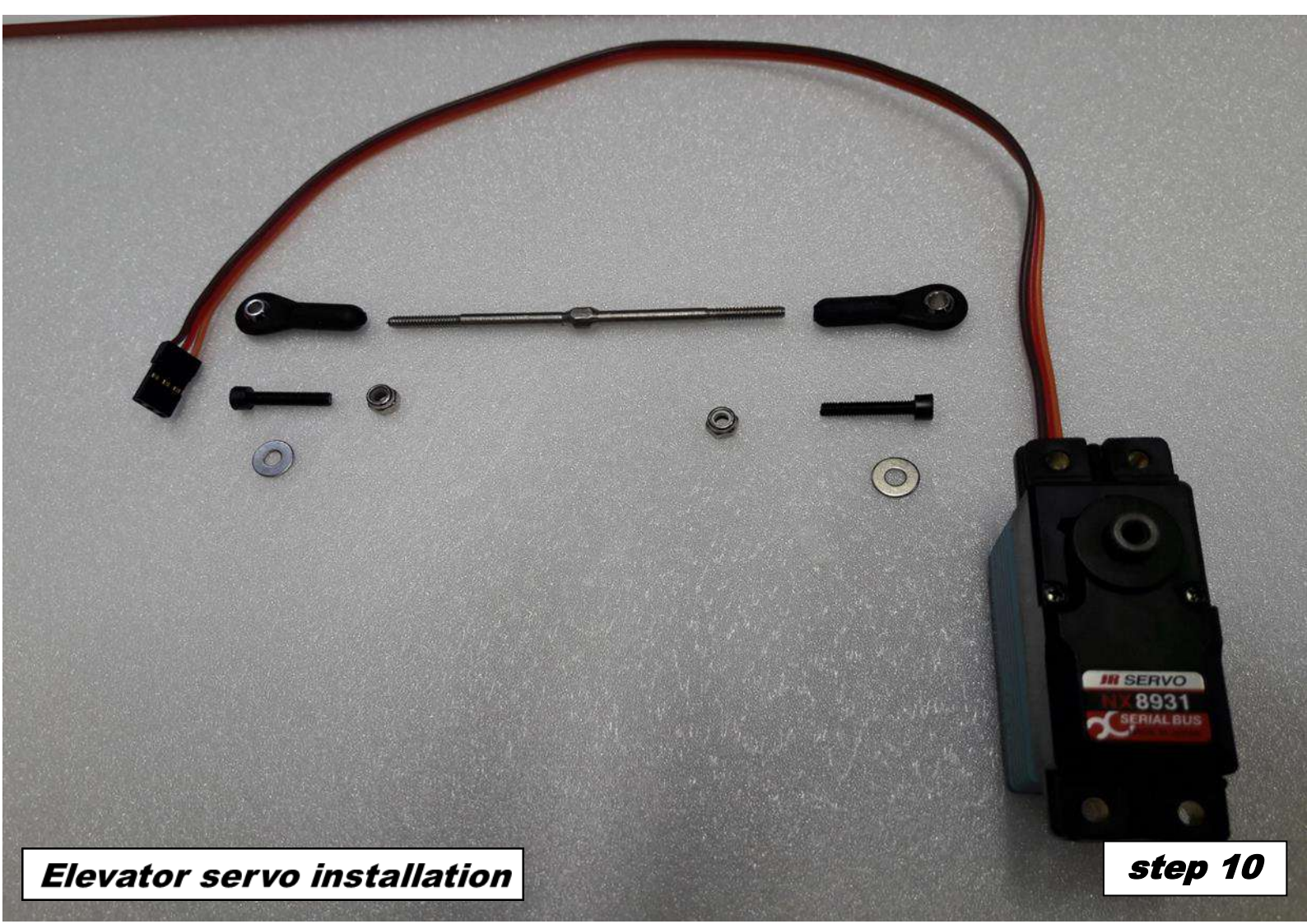
step 06





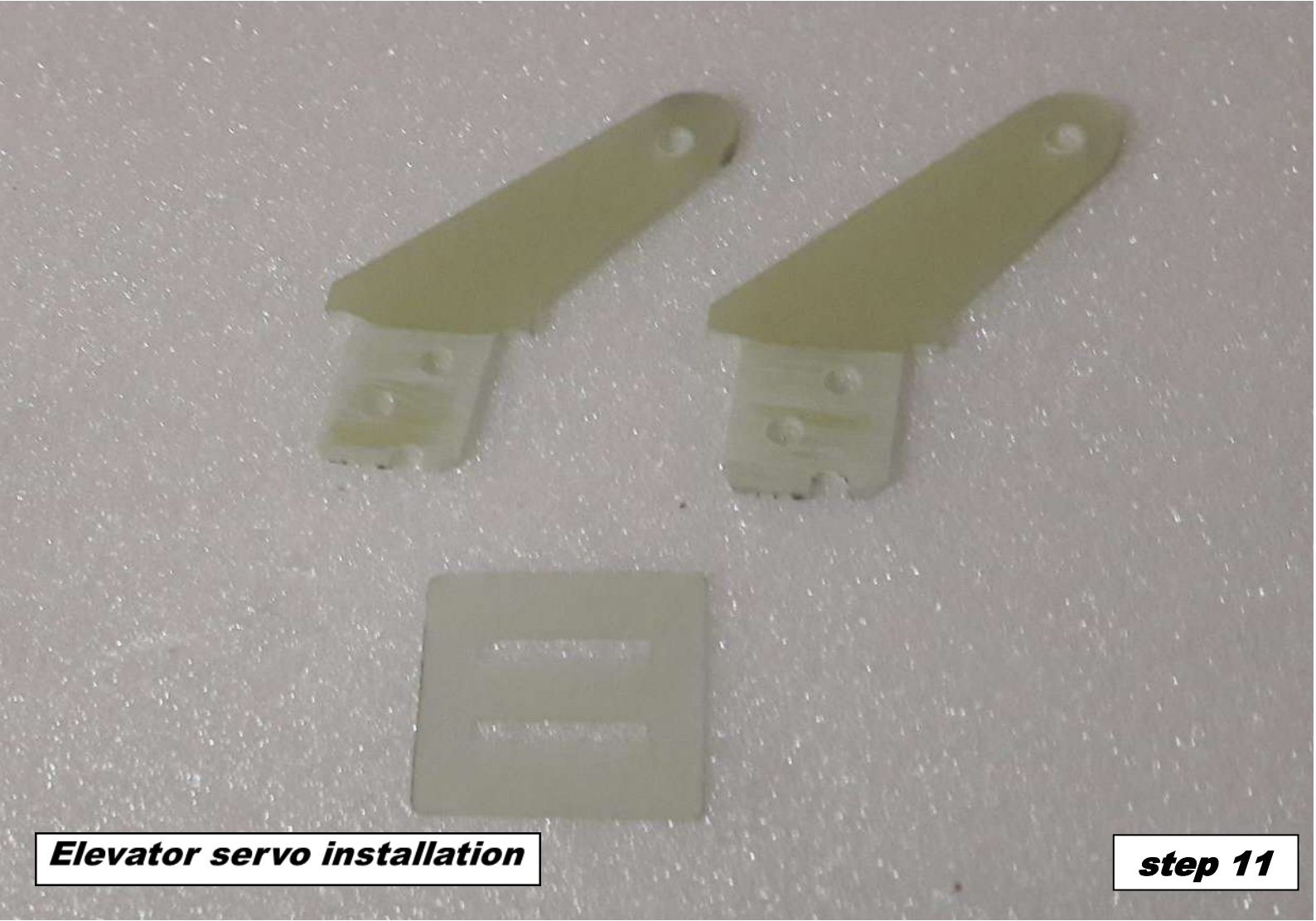
Aileron servo installation

step 09



Elevator servo installation

step 10



Elevator servo installation

step 11



Elevator servo installation

step 12

OPTION 1



Rudder and servo installation

step 13

OPTION 1



Rudder and servo installation

step 14

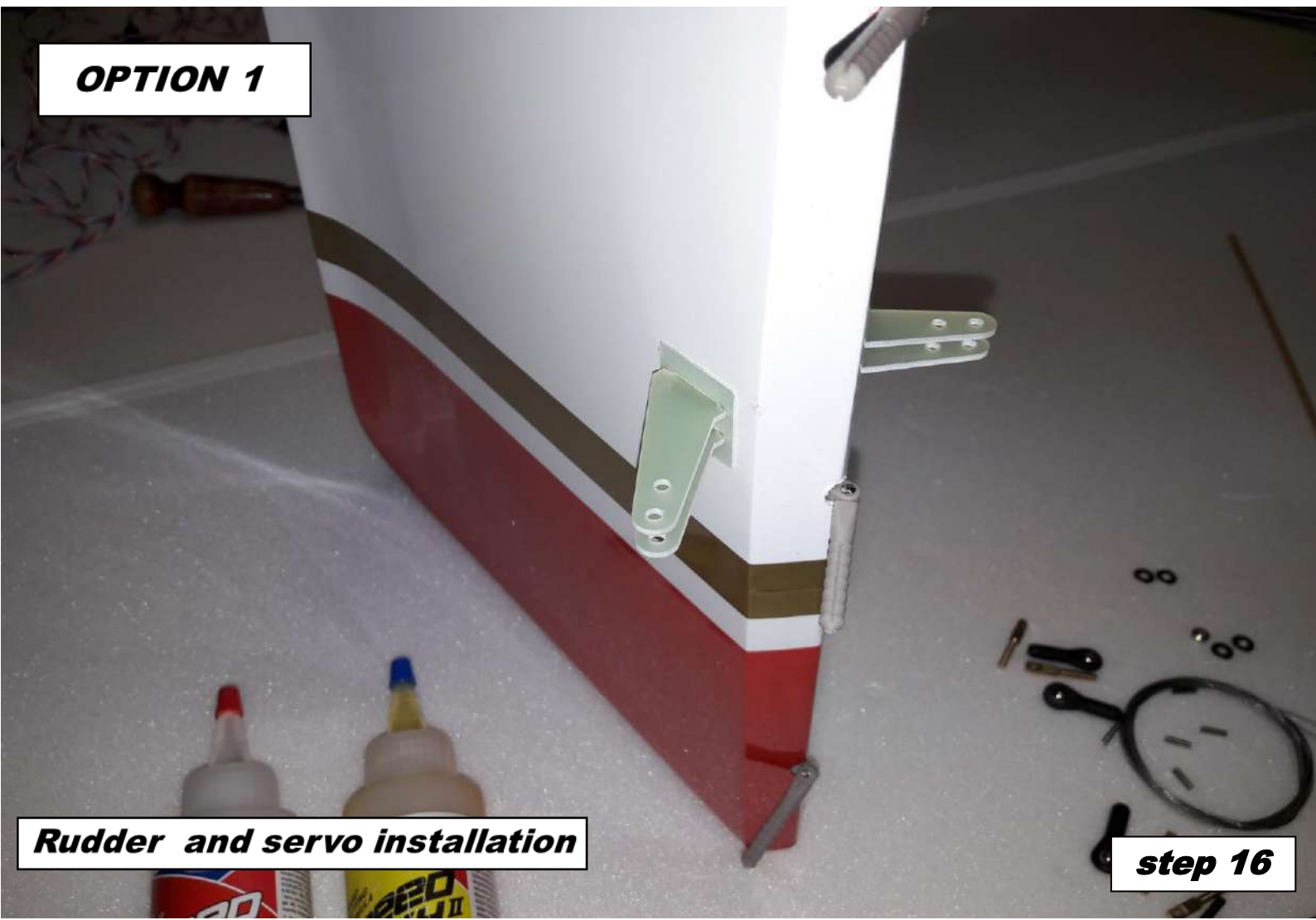
OPTION 1



Rudder and servo installation

step 15

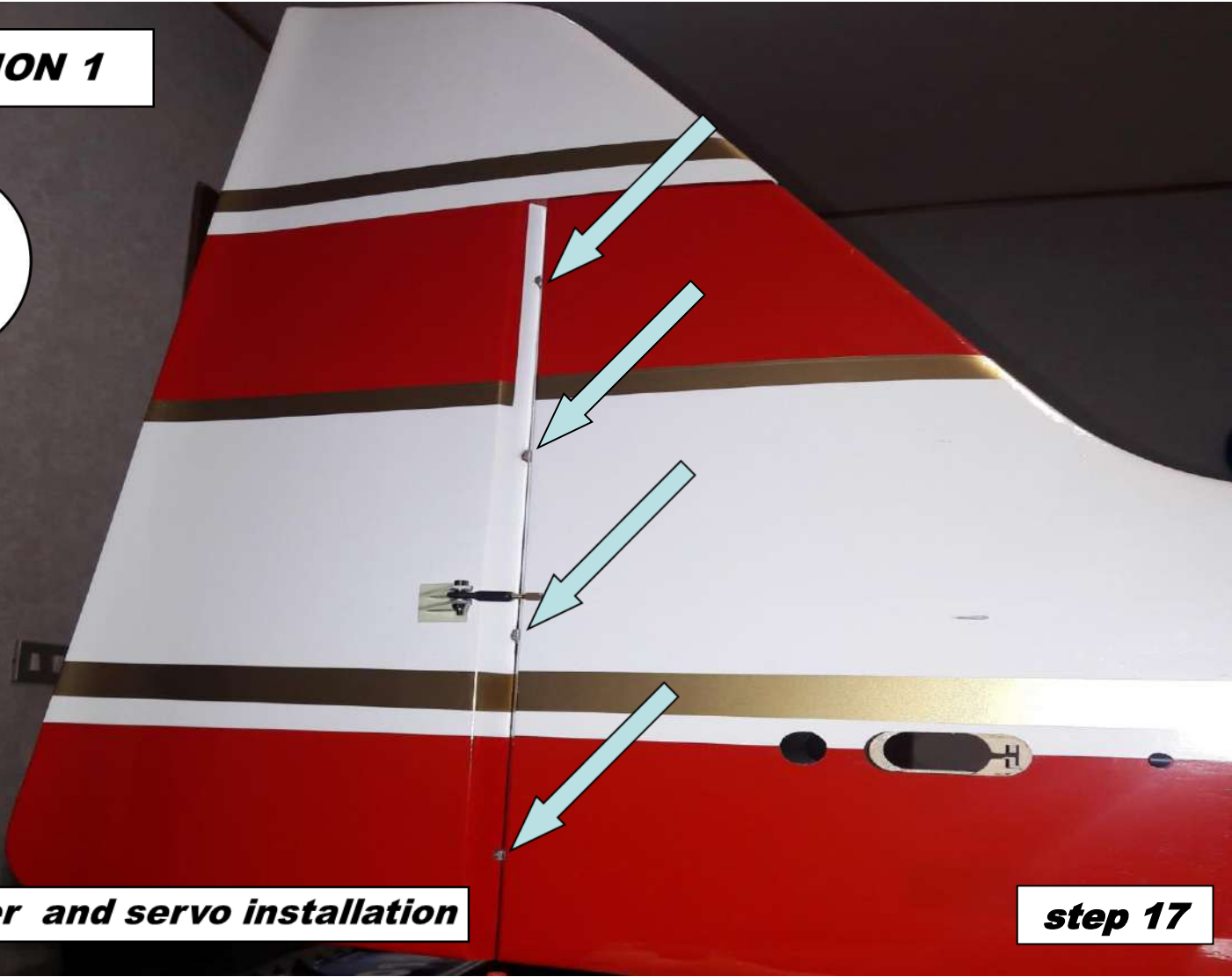
OPTION 1



Rudder and servo installation

step 16

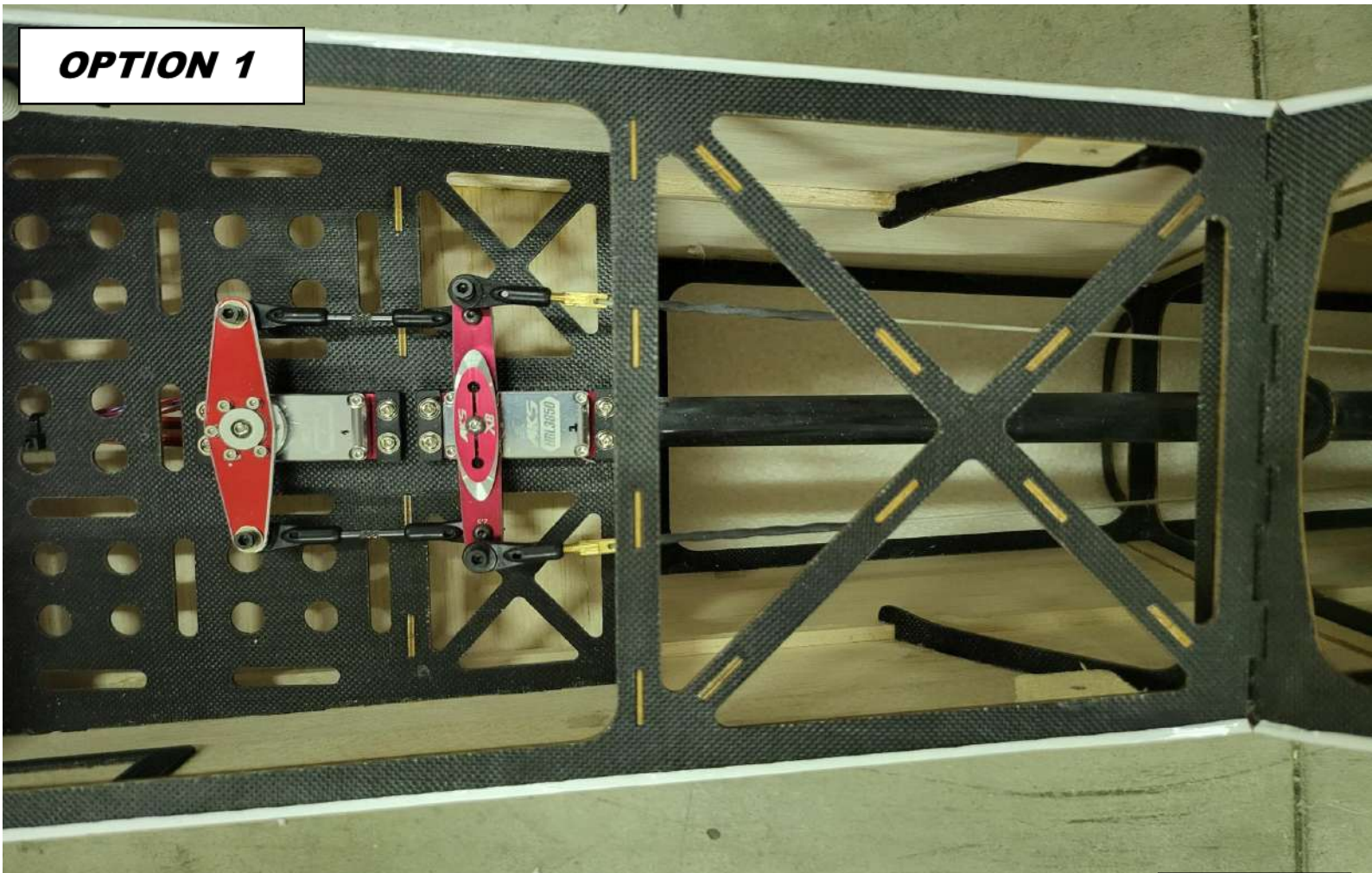
OPTION 1



Rudder and servo installation

step 17

OPTION 1



Rudder and servo installation

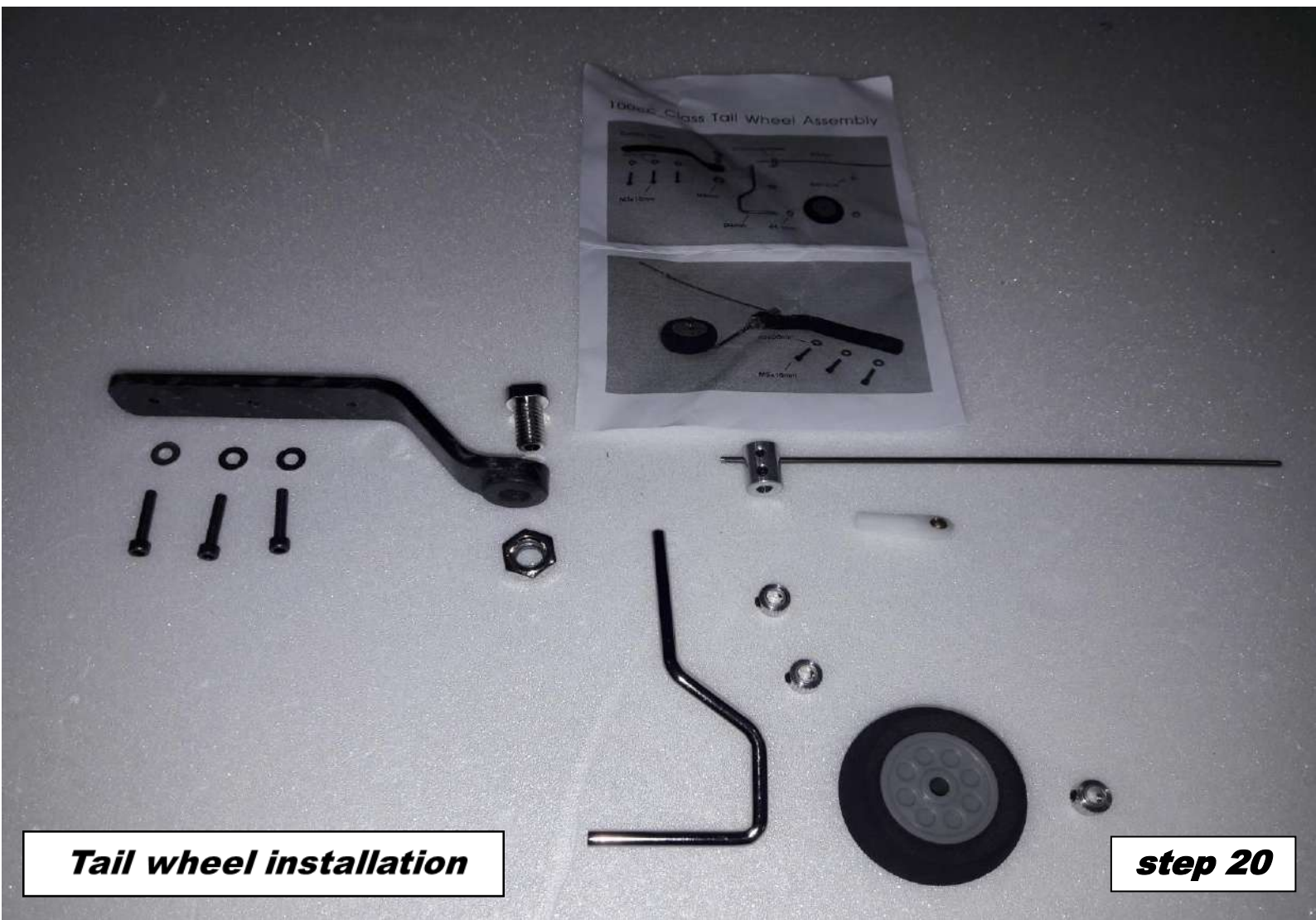
step 18

Option 2



Rudder and servo installation

step 19



Tail wheel installation

step 20

Tail wheel installation



step 21



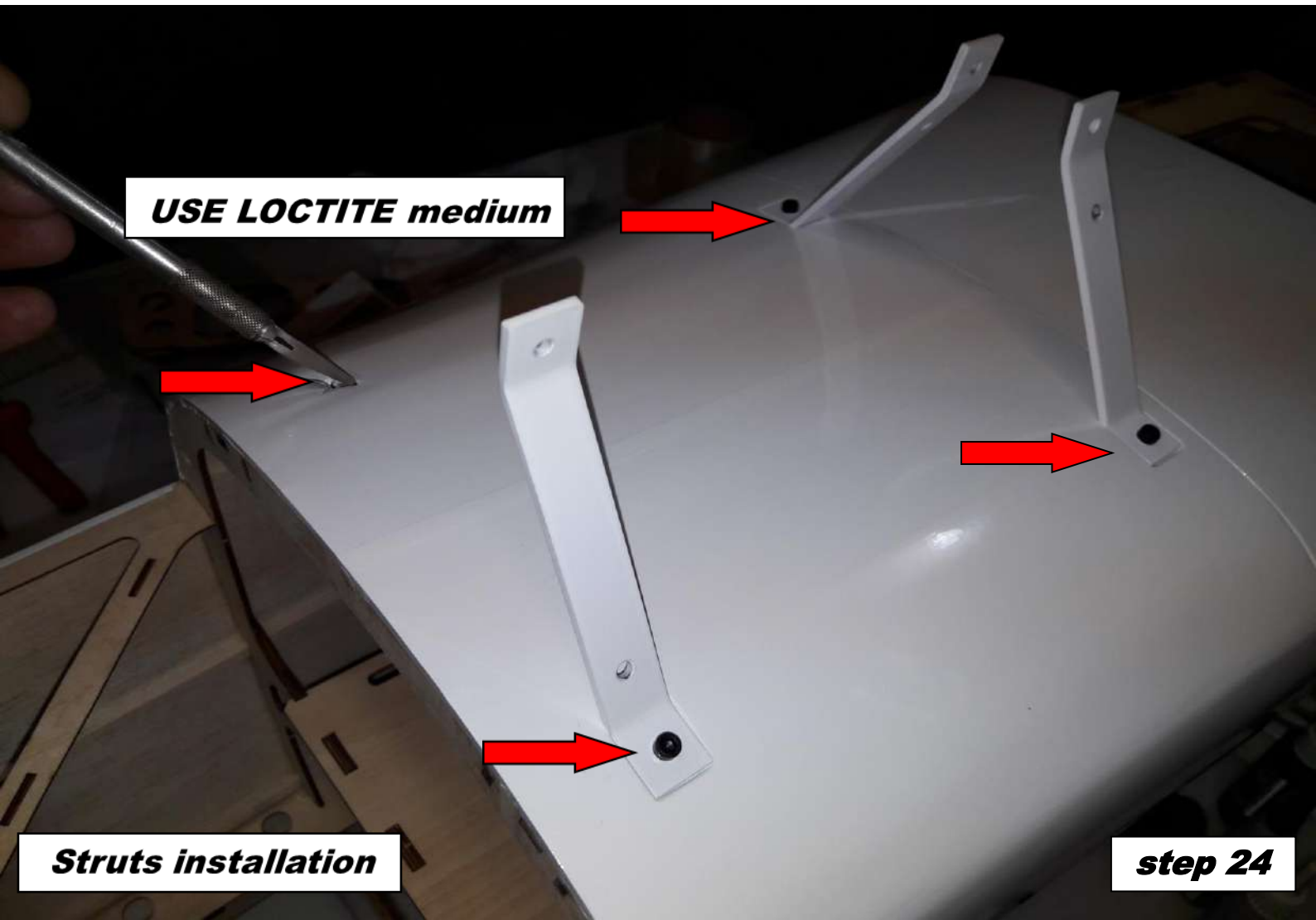
Tail wheel installation

step 22



Struts installation

step 23



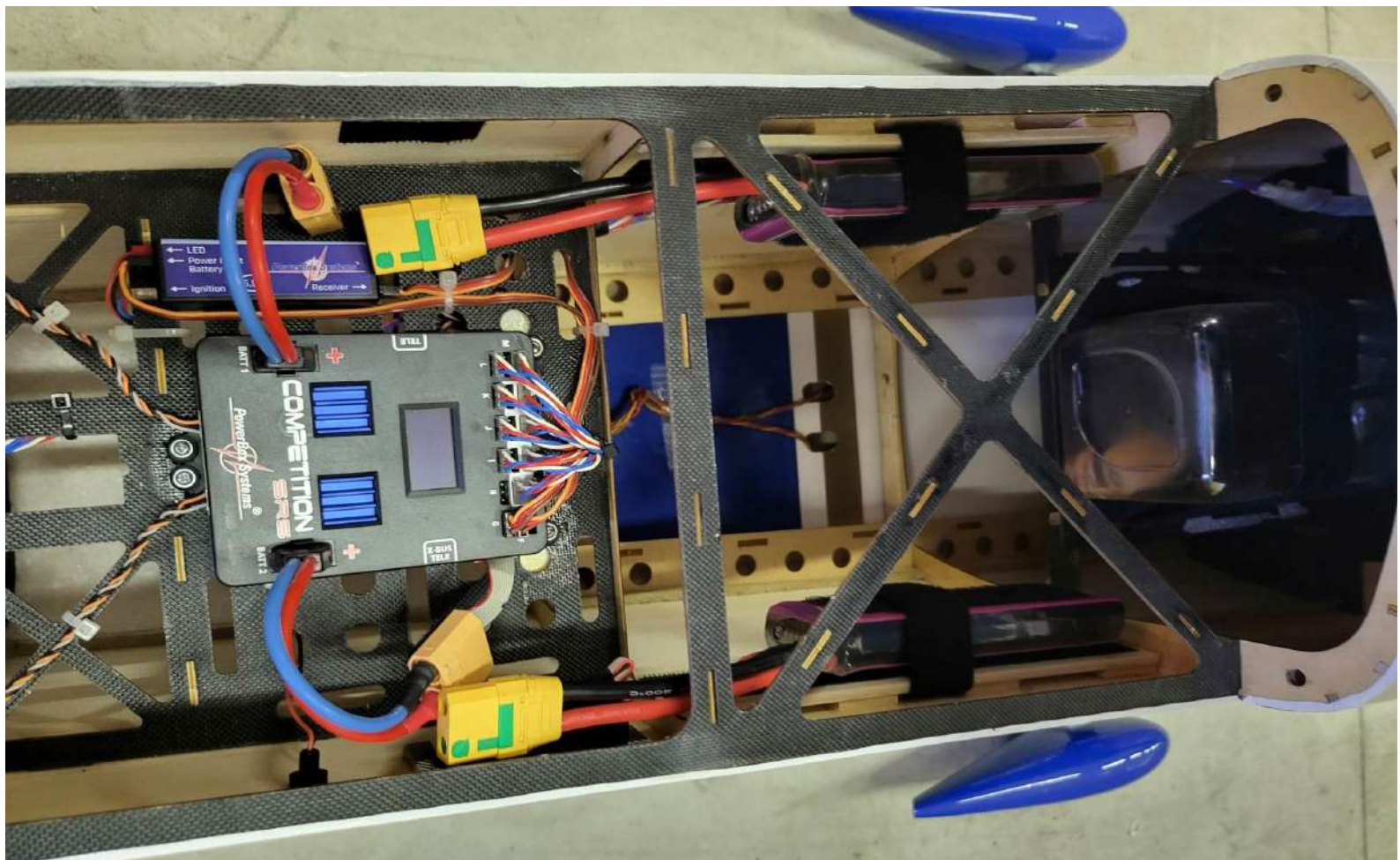
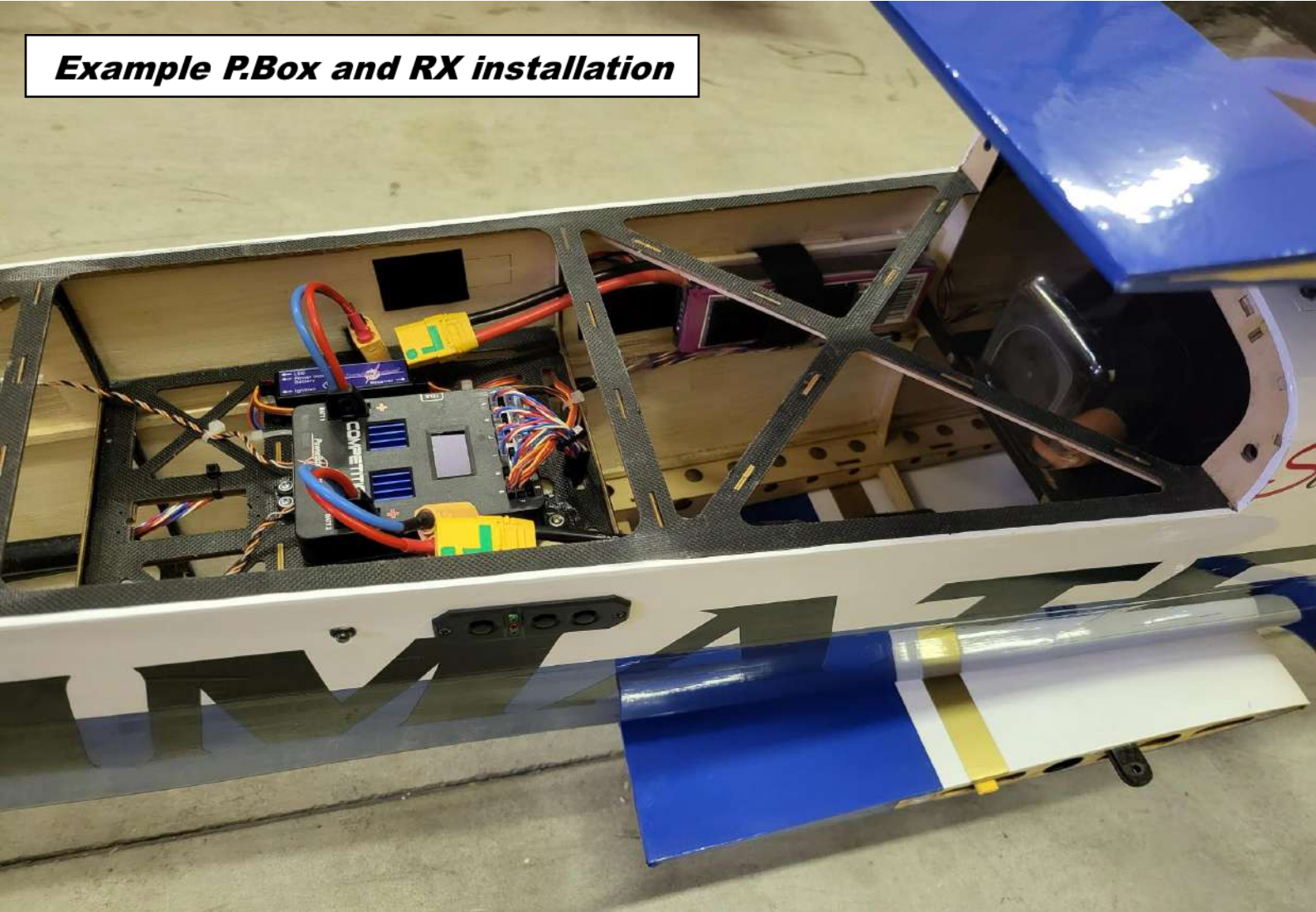
USE LOCTITE medium

Struts installation

step 24



Example P.Box and RX installation



Example P.Box and RX installation

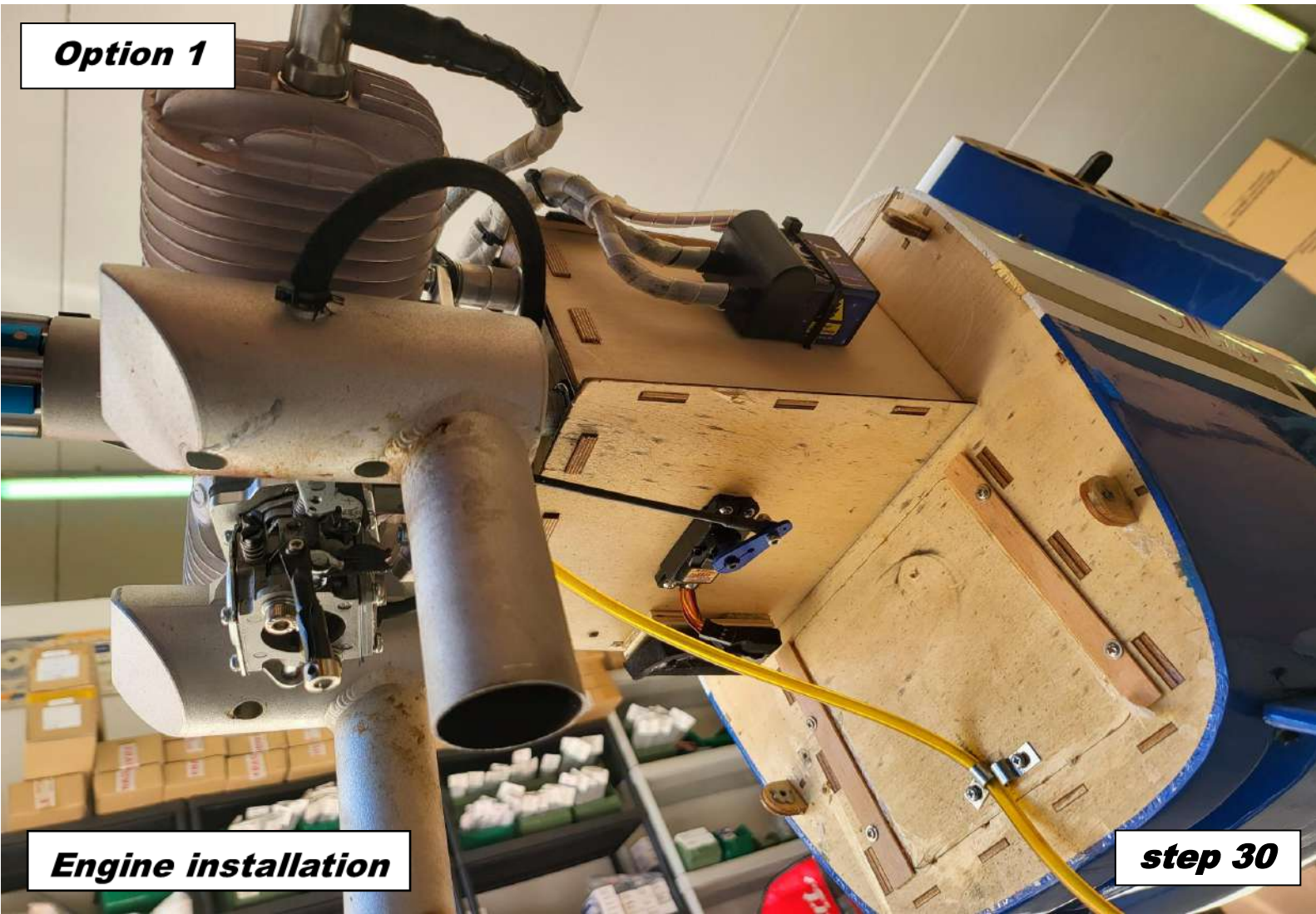
Option 1



Engine installation

step 29

Option 1



Engine installation

step 30

Option 1



Engine installation

Close hole

step 31

Option 2



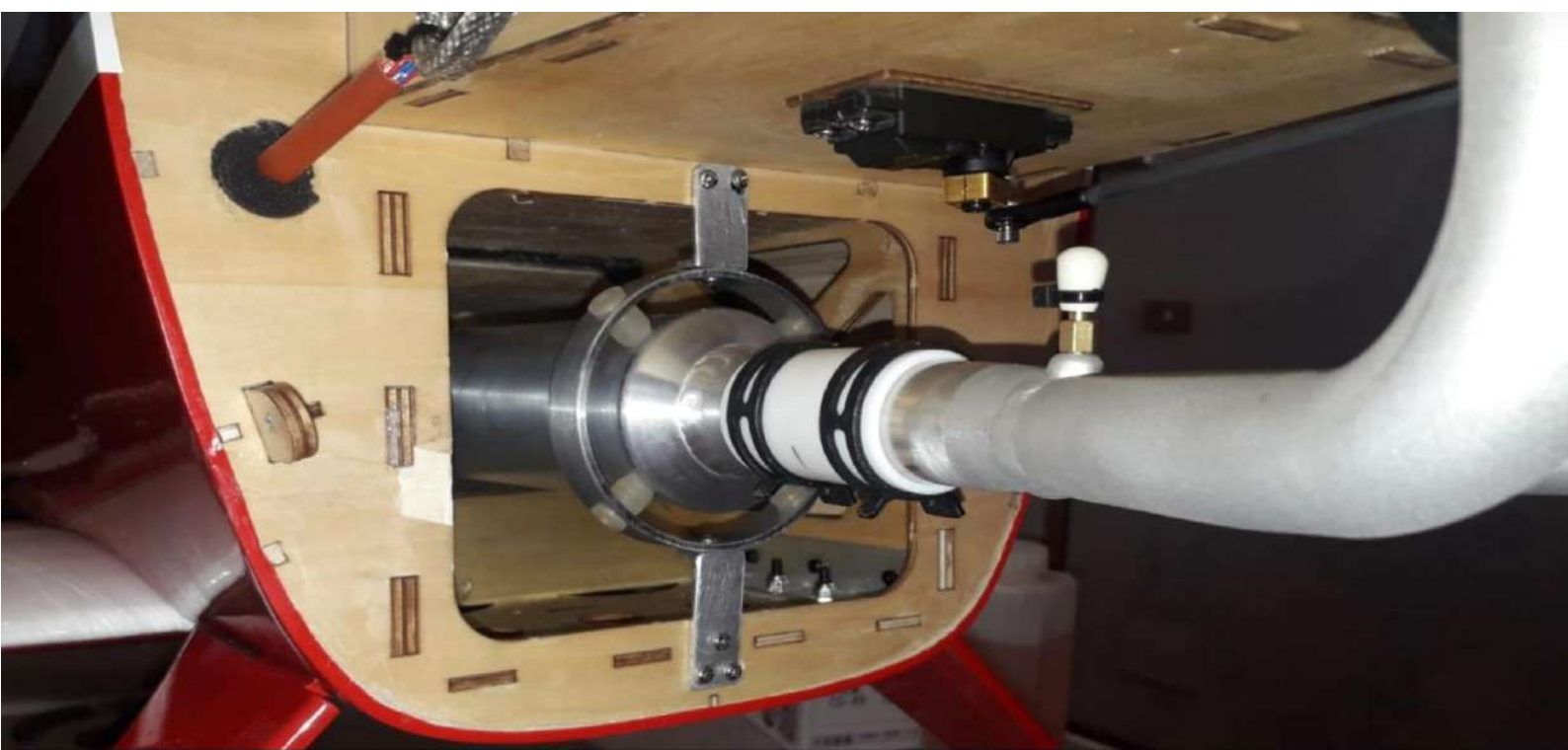
Engine installation

step 32



Option 2

step 33



Option 2



Engine installation

step 34

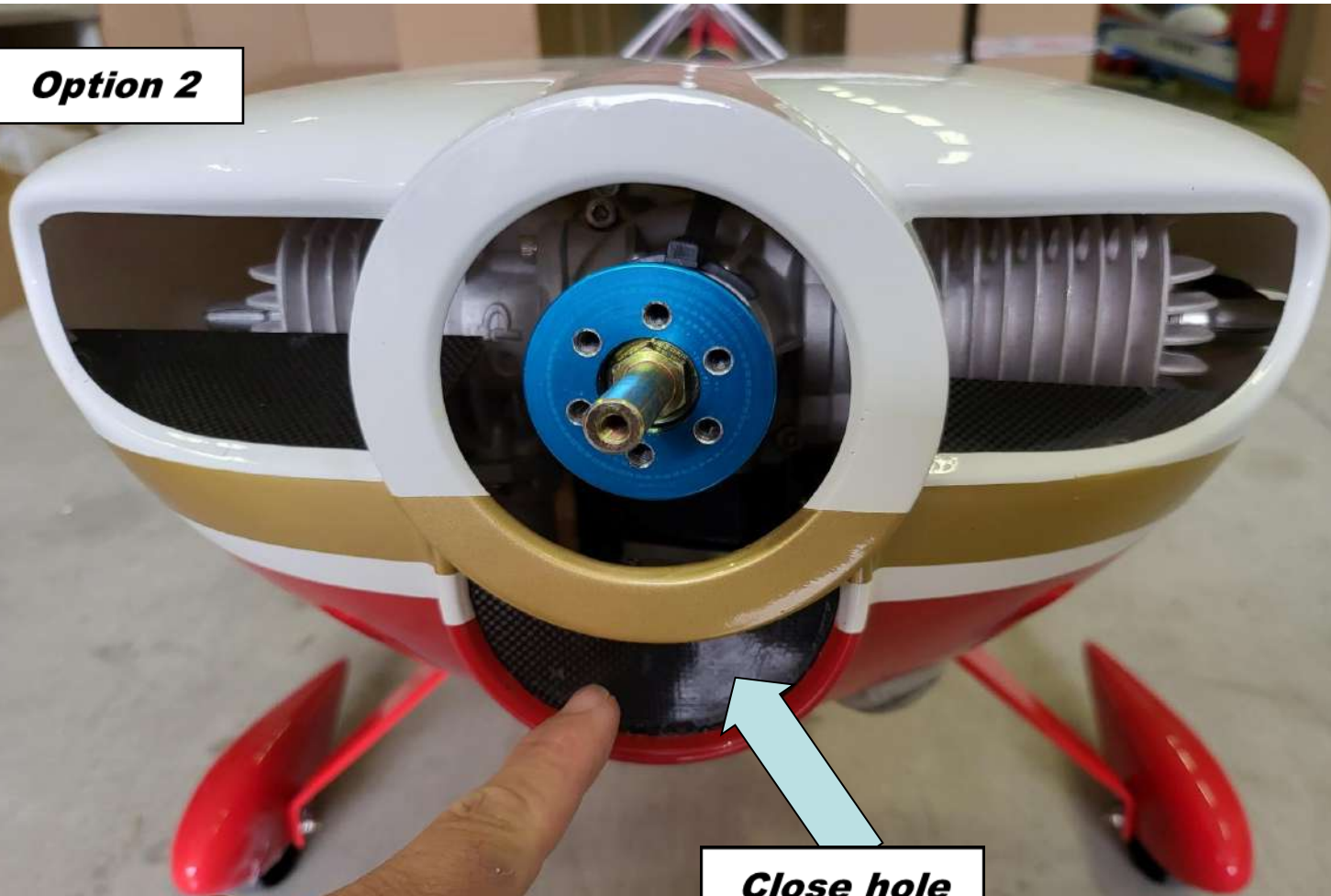
Option 2



Engine installation

step 35

Option 2



Engine installation

Close hole

step 36

Q80-7L V2 kv155

Electric motor installation example

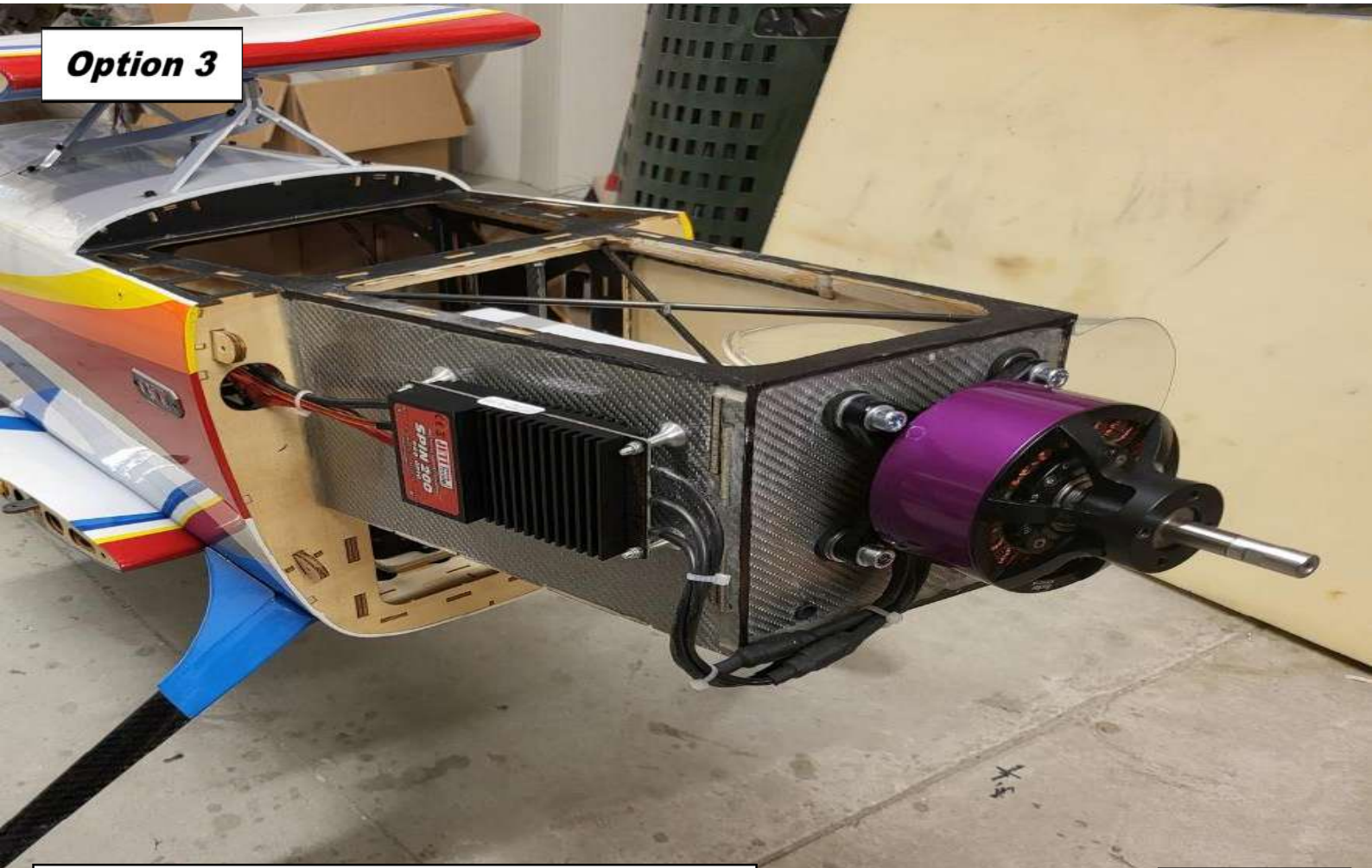
Option 3

37418024 EAN: 4250320249849



step 37

Option 3



Electric motor installation example

step 38

Option 3



Electric motor installation example

step 39

Option 3

**Add this cooling hole
both sides of fuselage**



JR ELITE
SPEED 4000

Sebastiano Silvestri

Miss **ULTRA**

Electric motor installation example

step 40



L. Gear and wheel pants installation

step 42



Wing assmbling

step 43



Wing assmbling

step 43



Wing assmbling

step 44





Wing assmbling

step 47



Wing assmbling

step 48

check the CG without wing panels installed !

