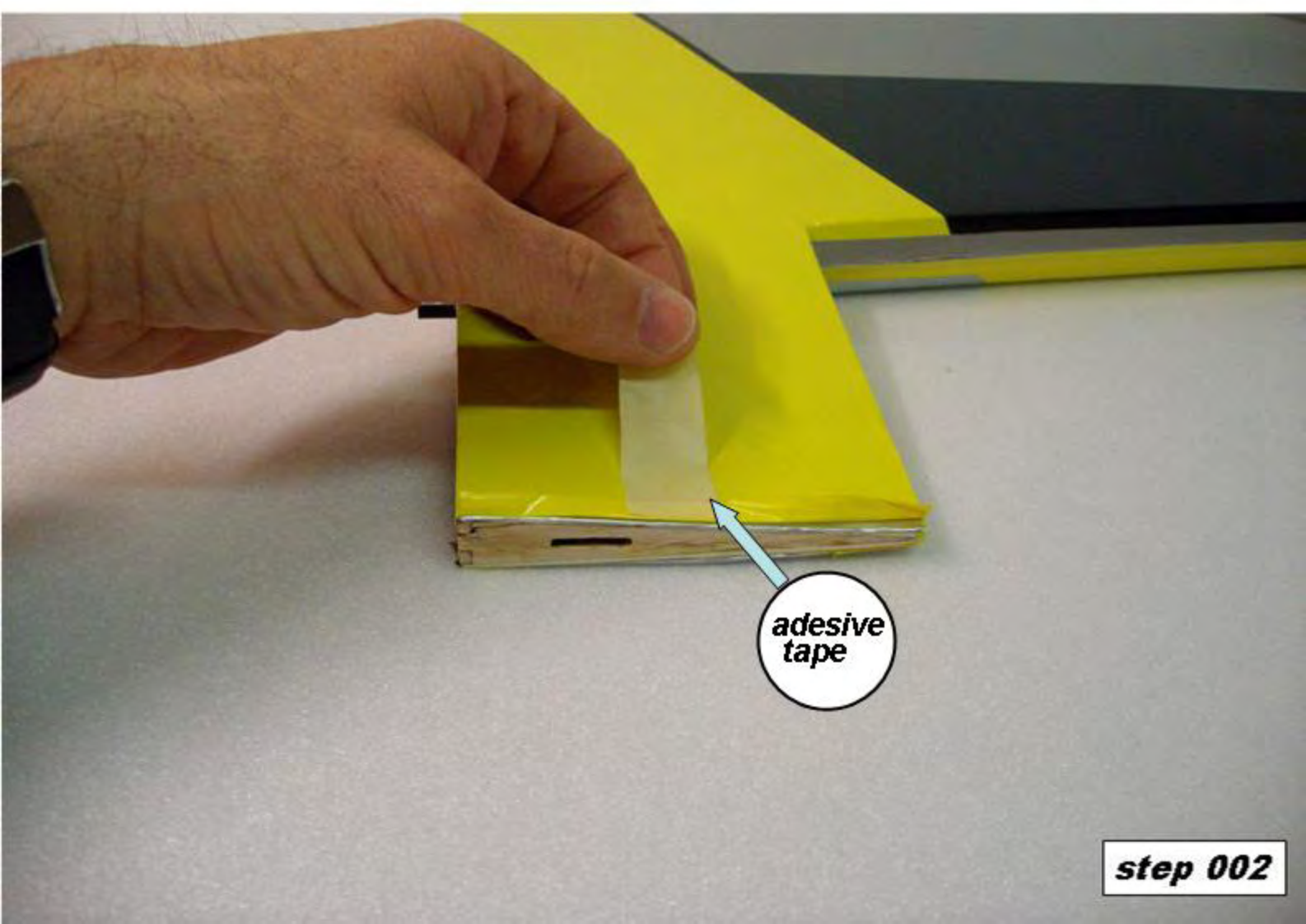
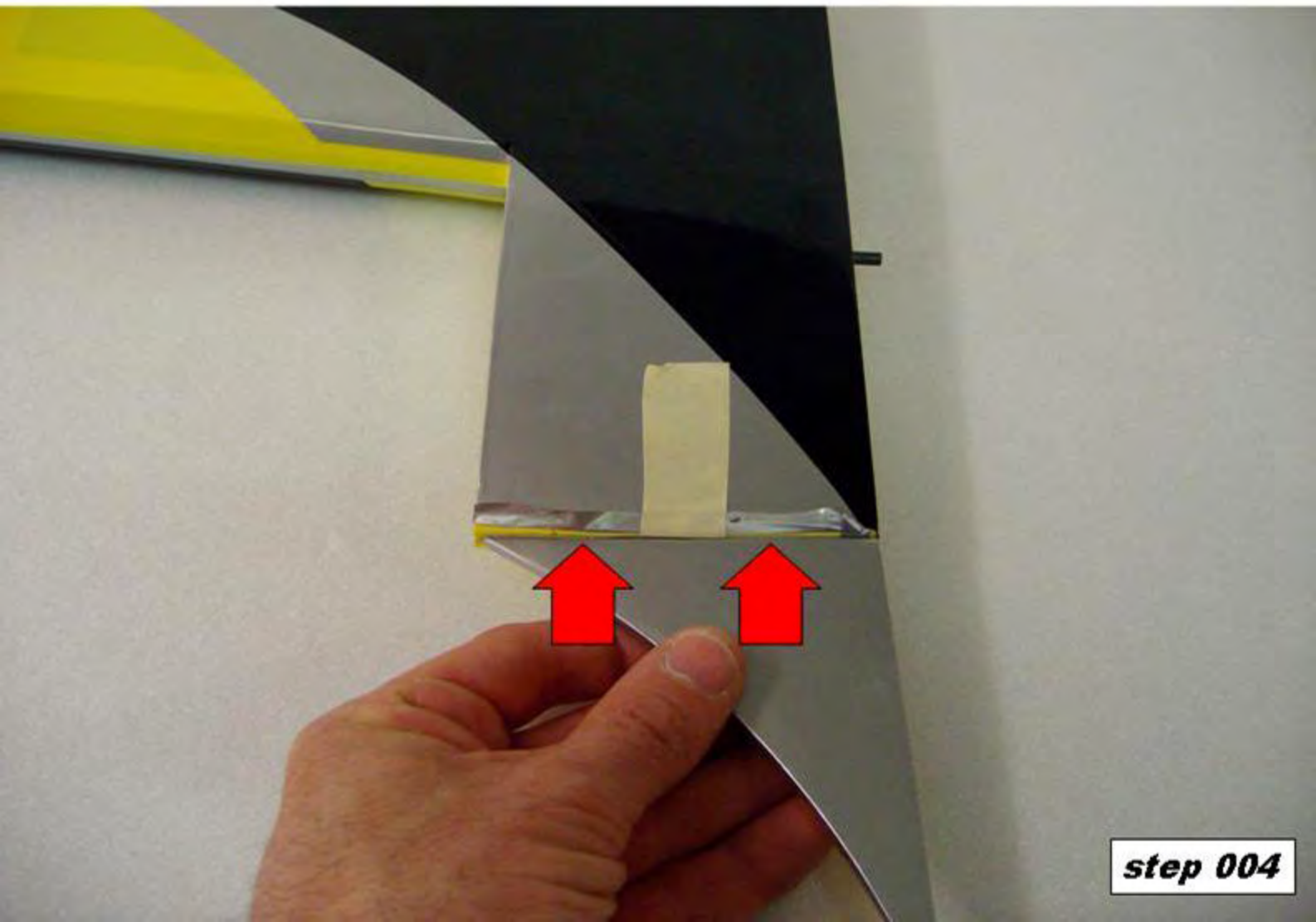
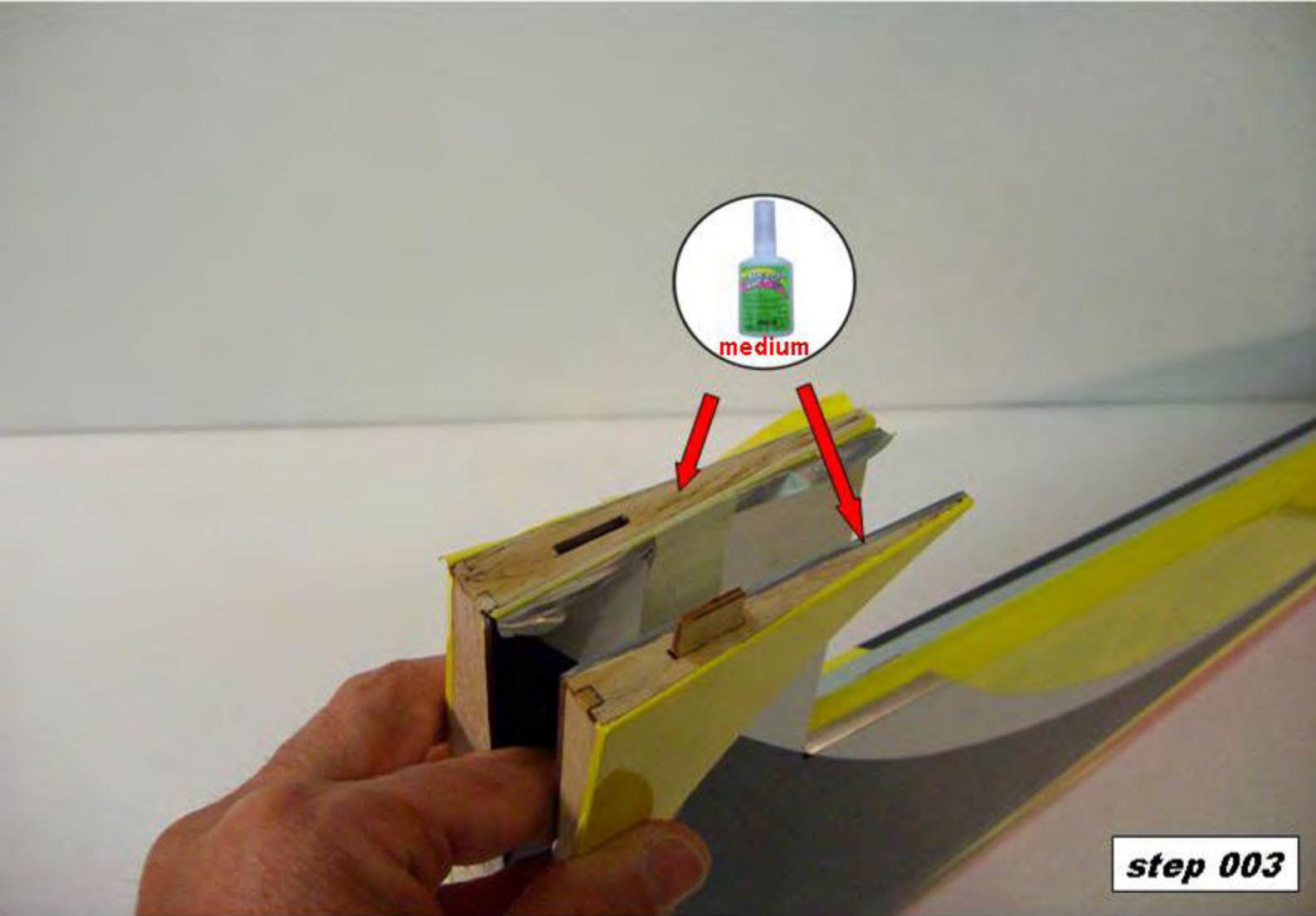


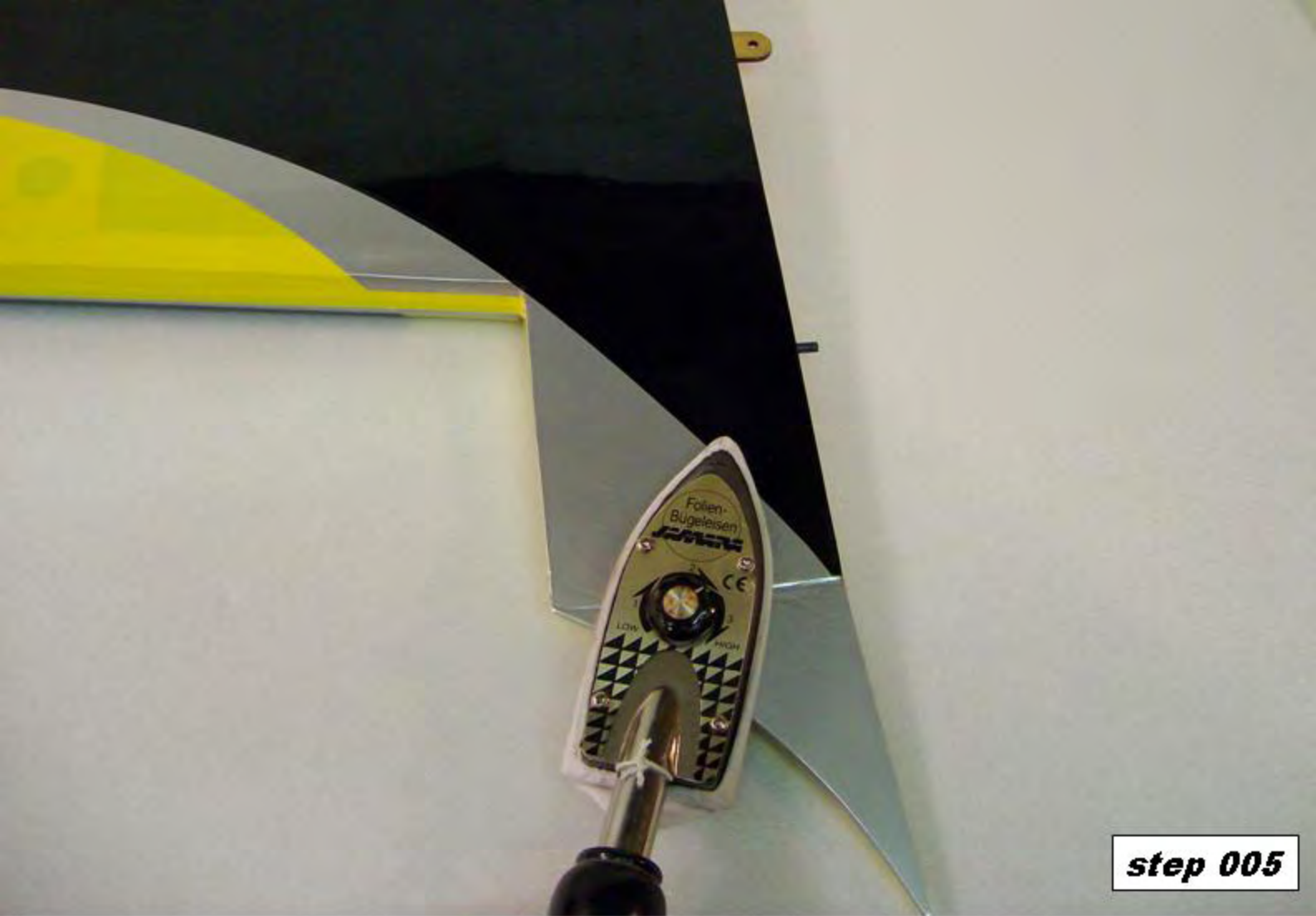


**step 001**



**step 002**

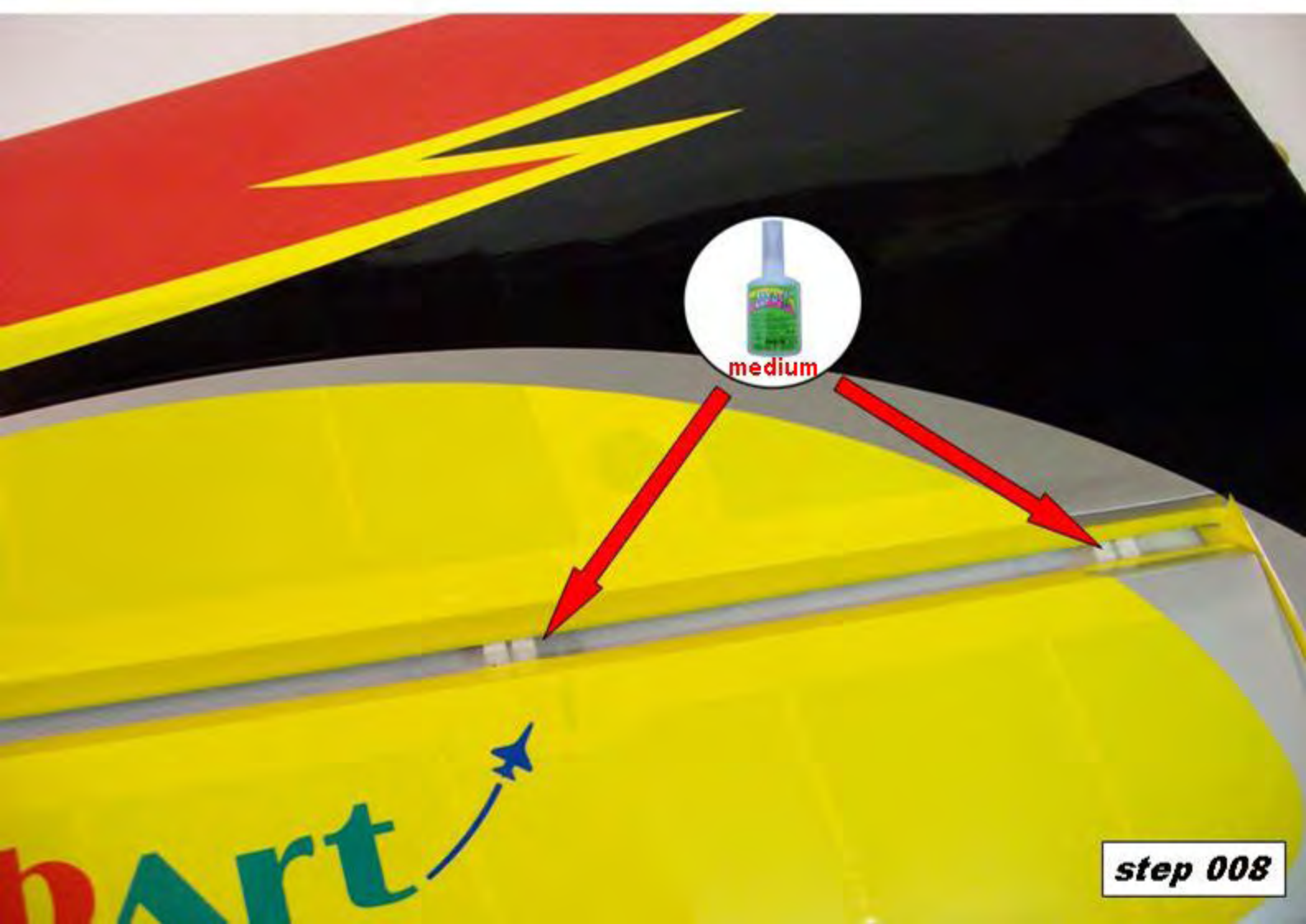
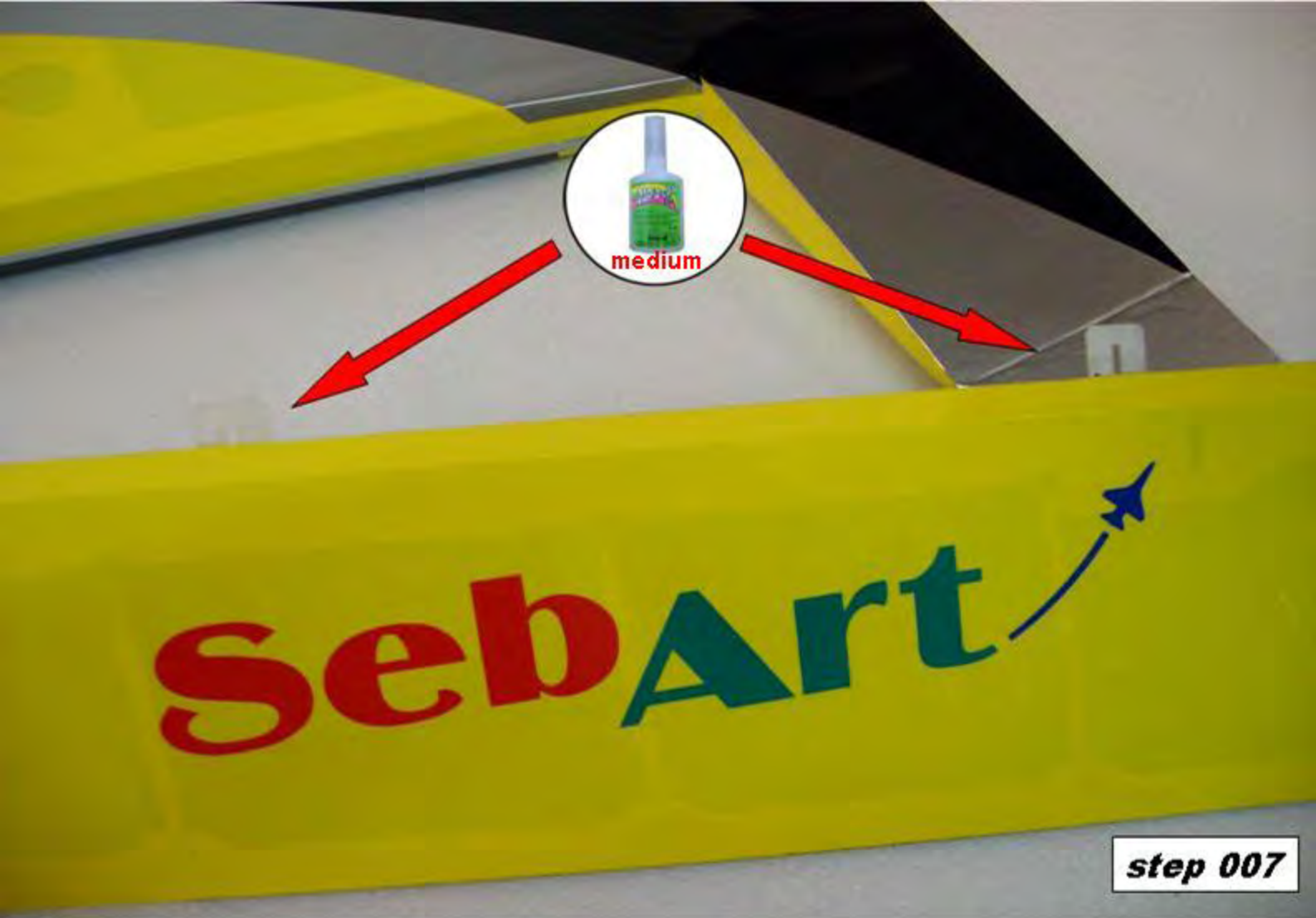


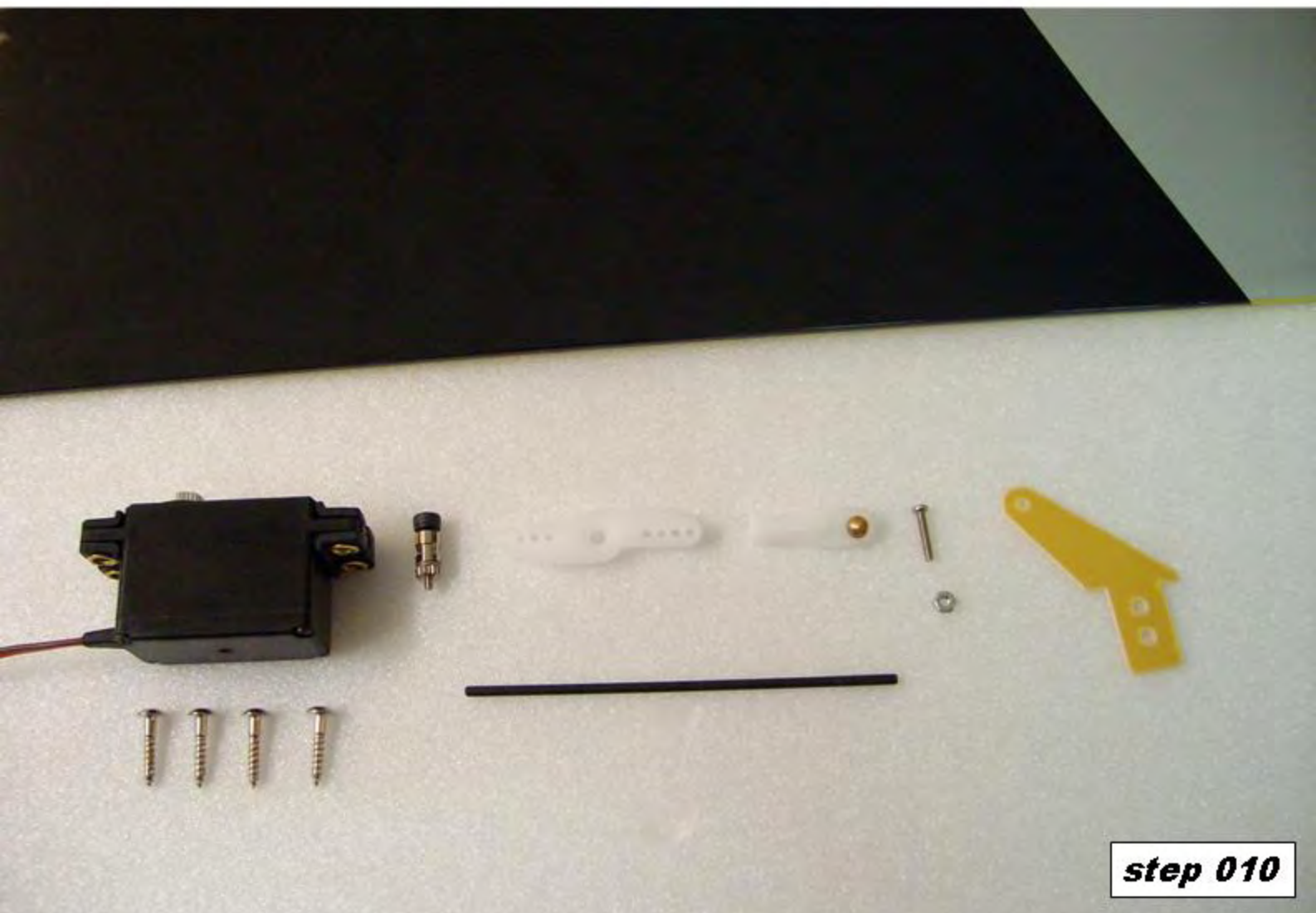


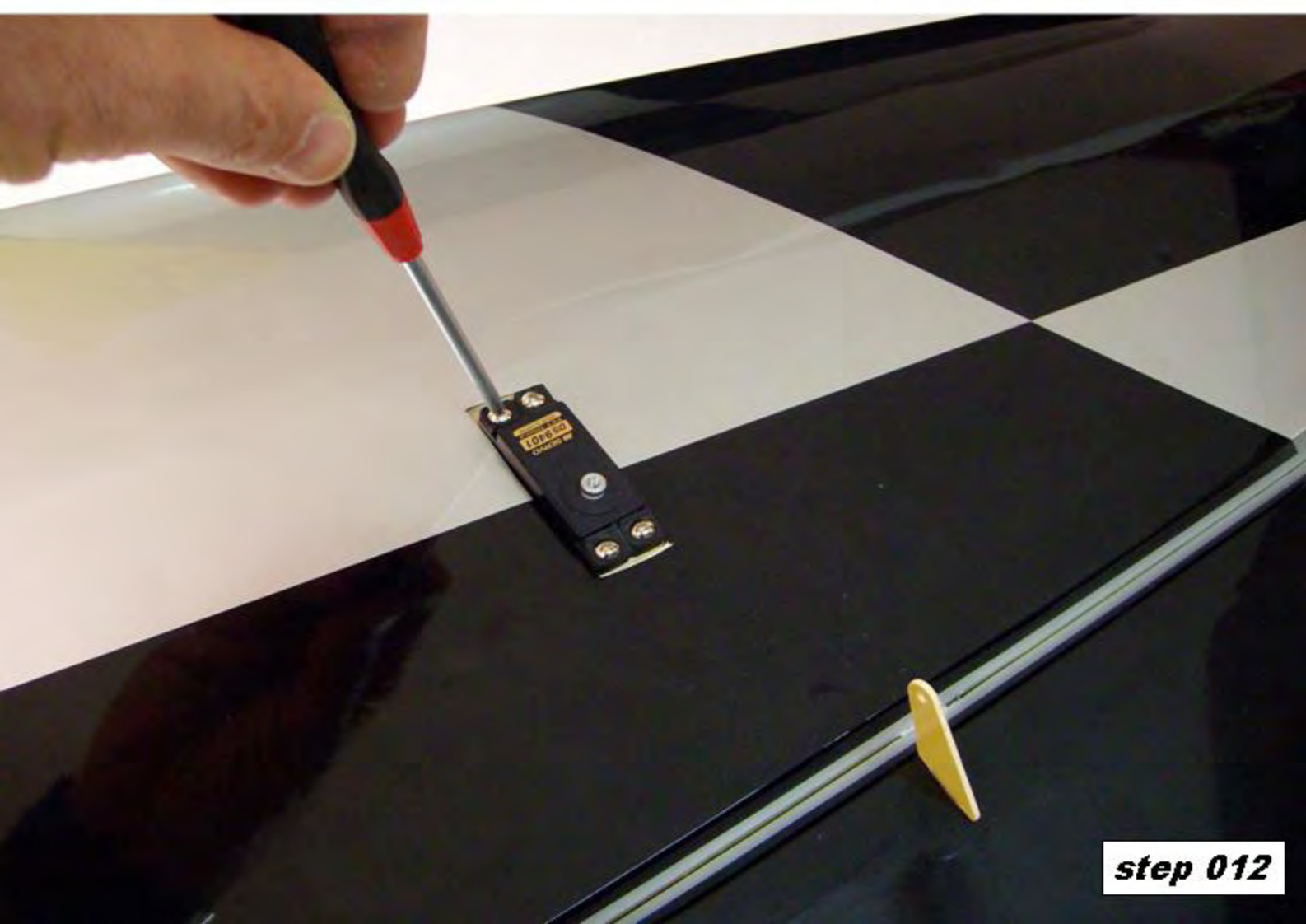
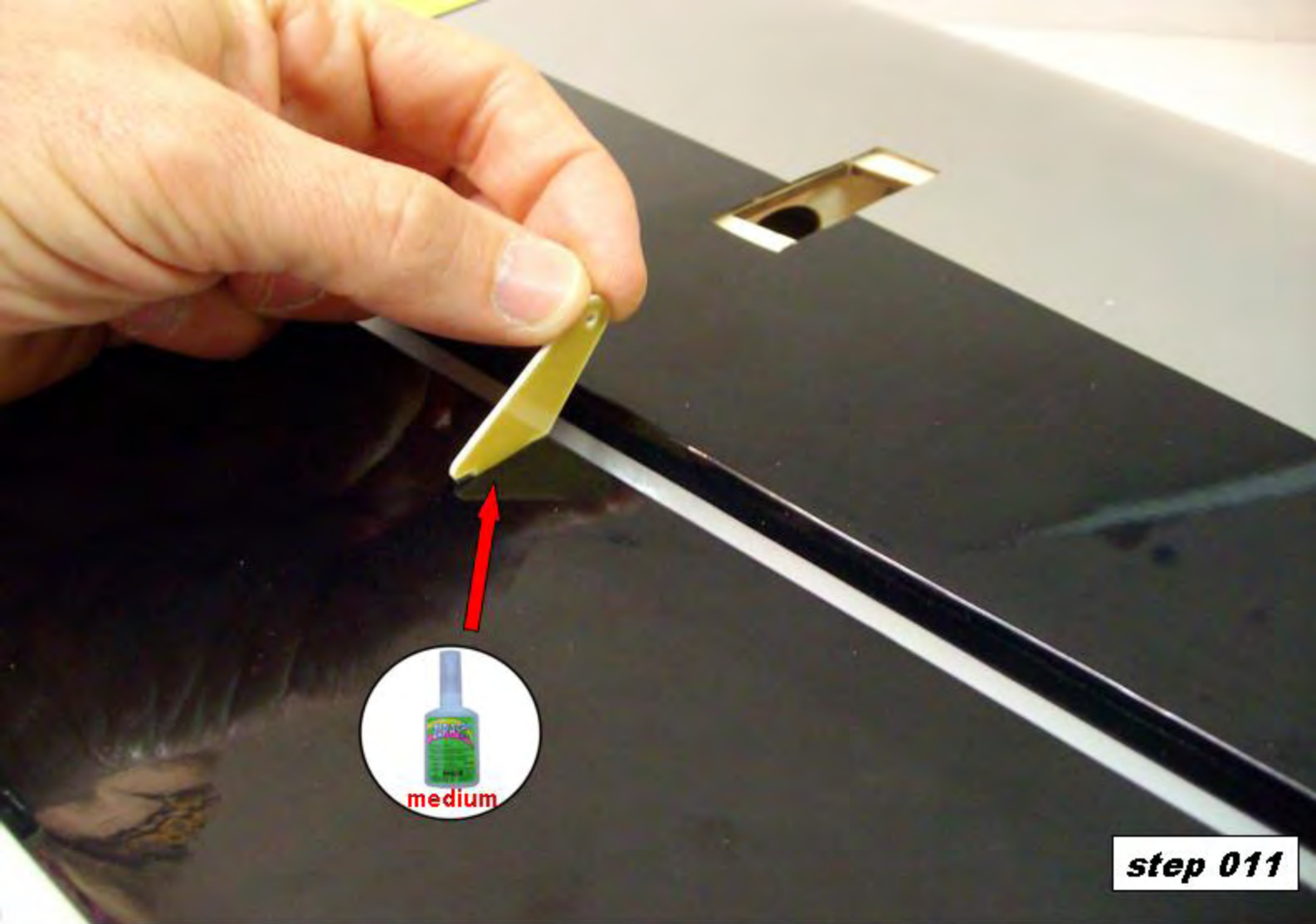
**step 005**



**step 006**

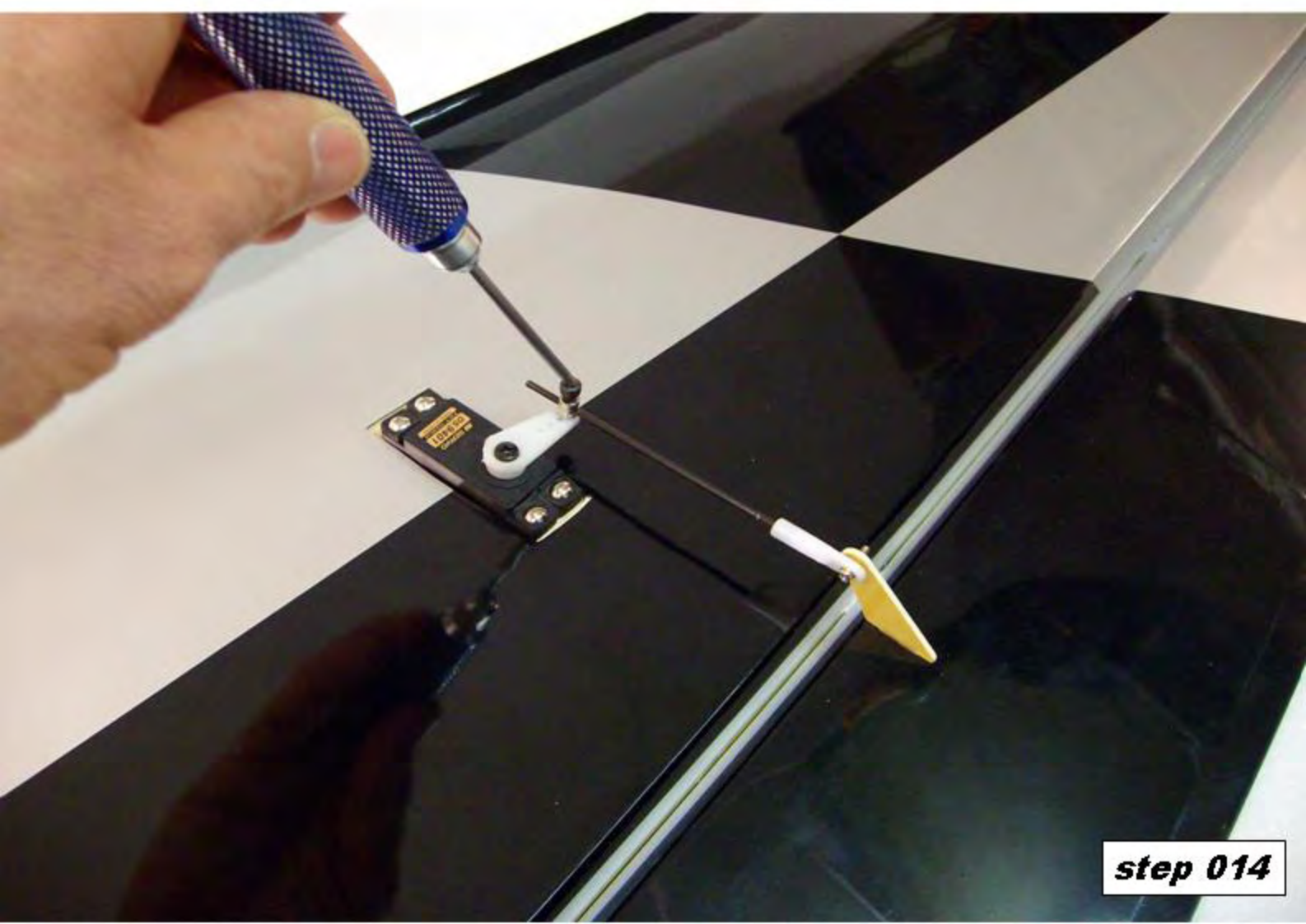




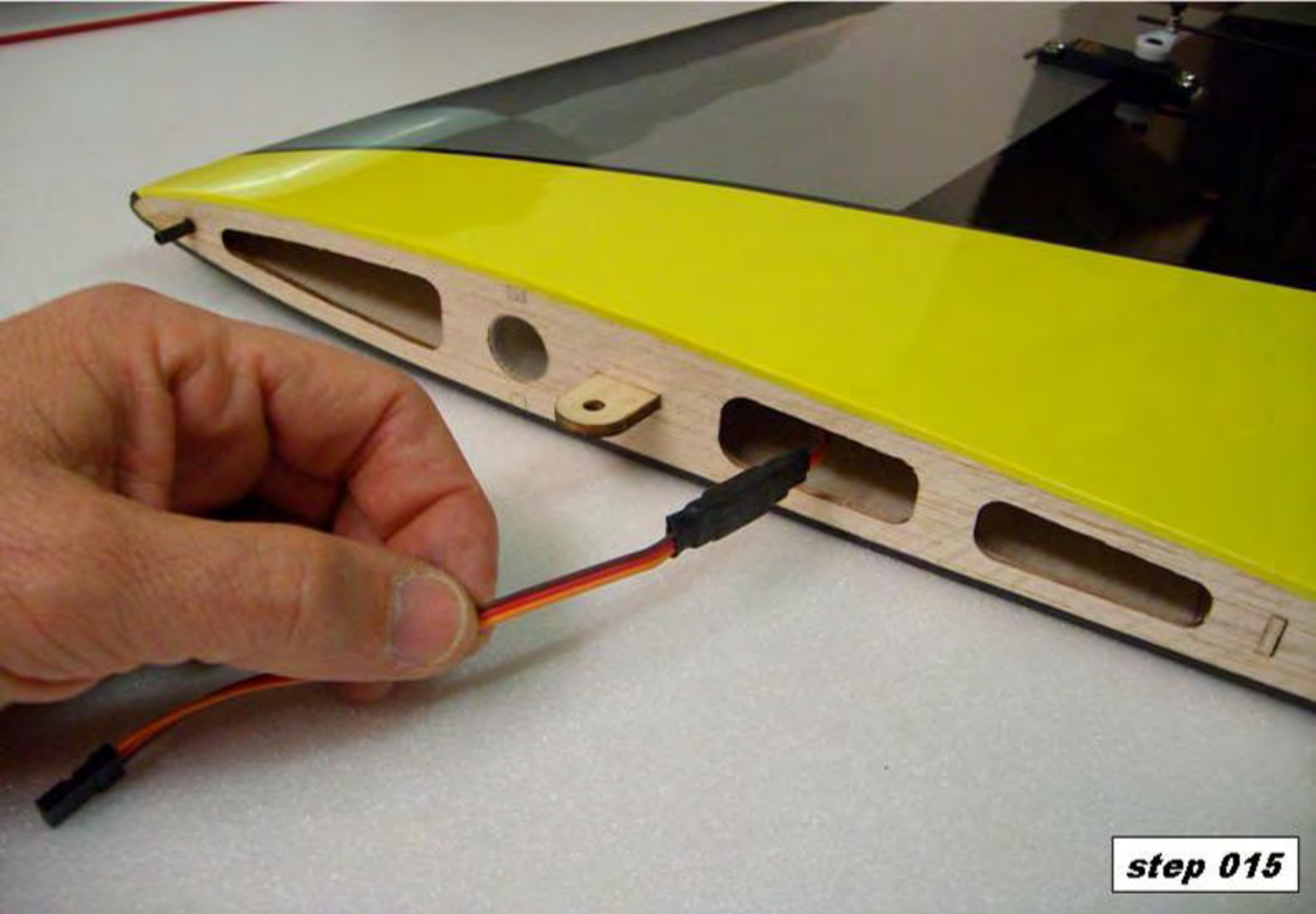




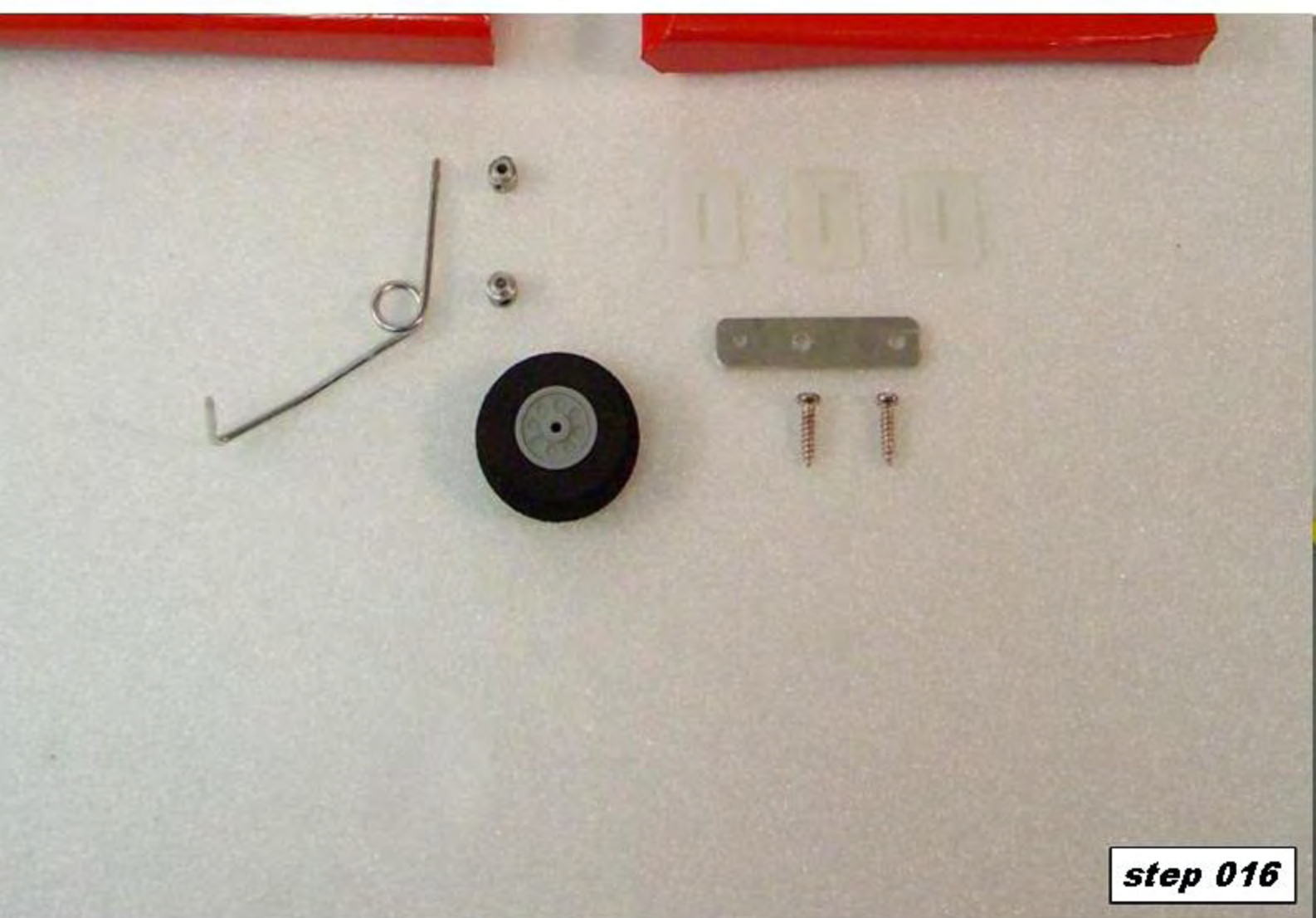
**step 013**



**step 014**

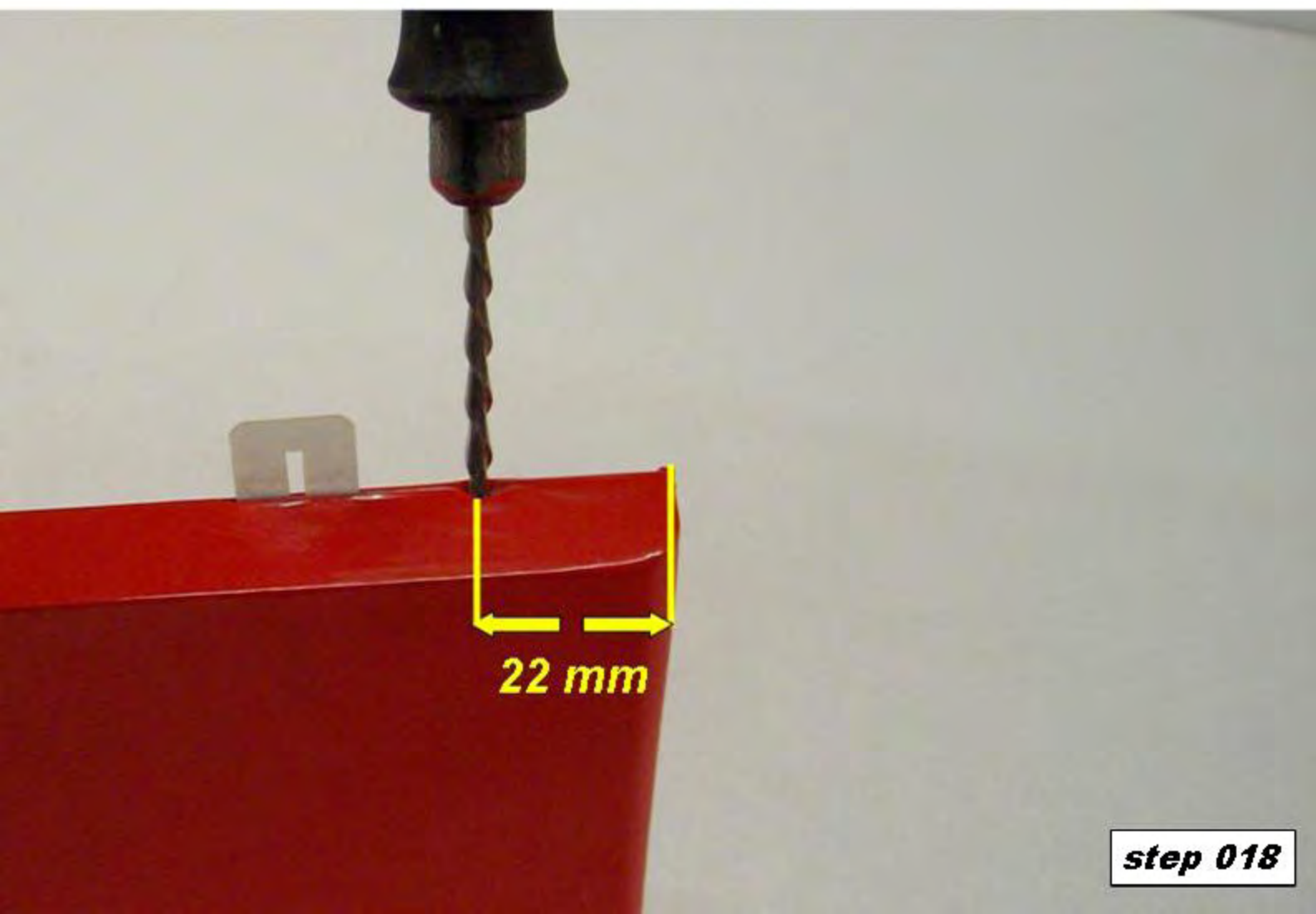
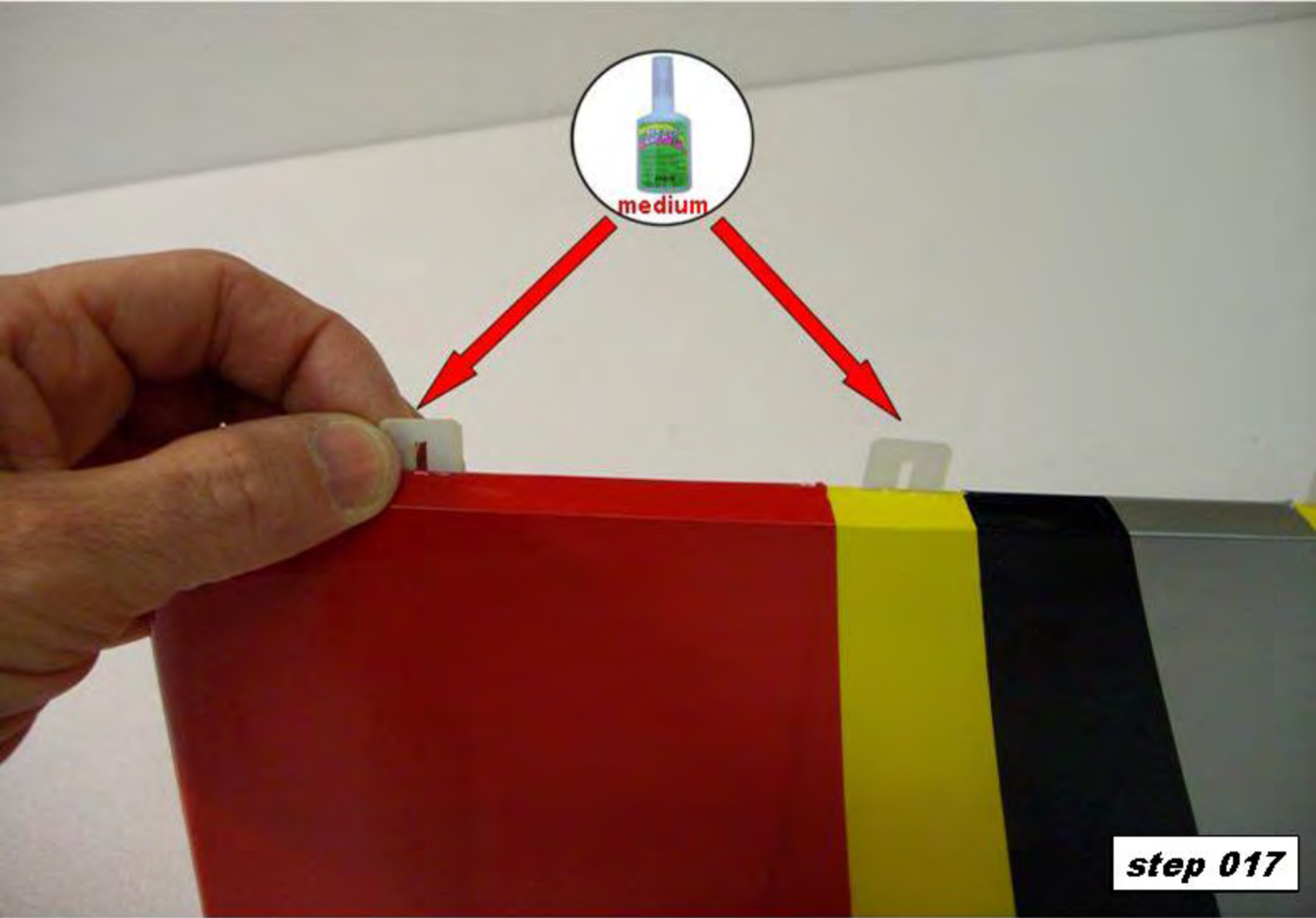


**step 015**



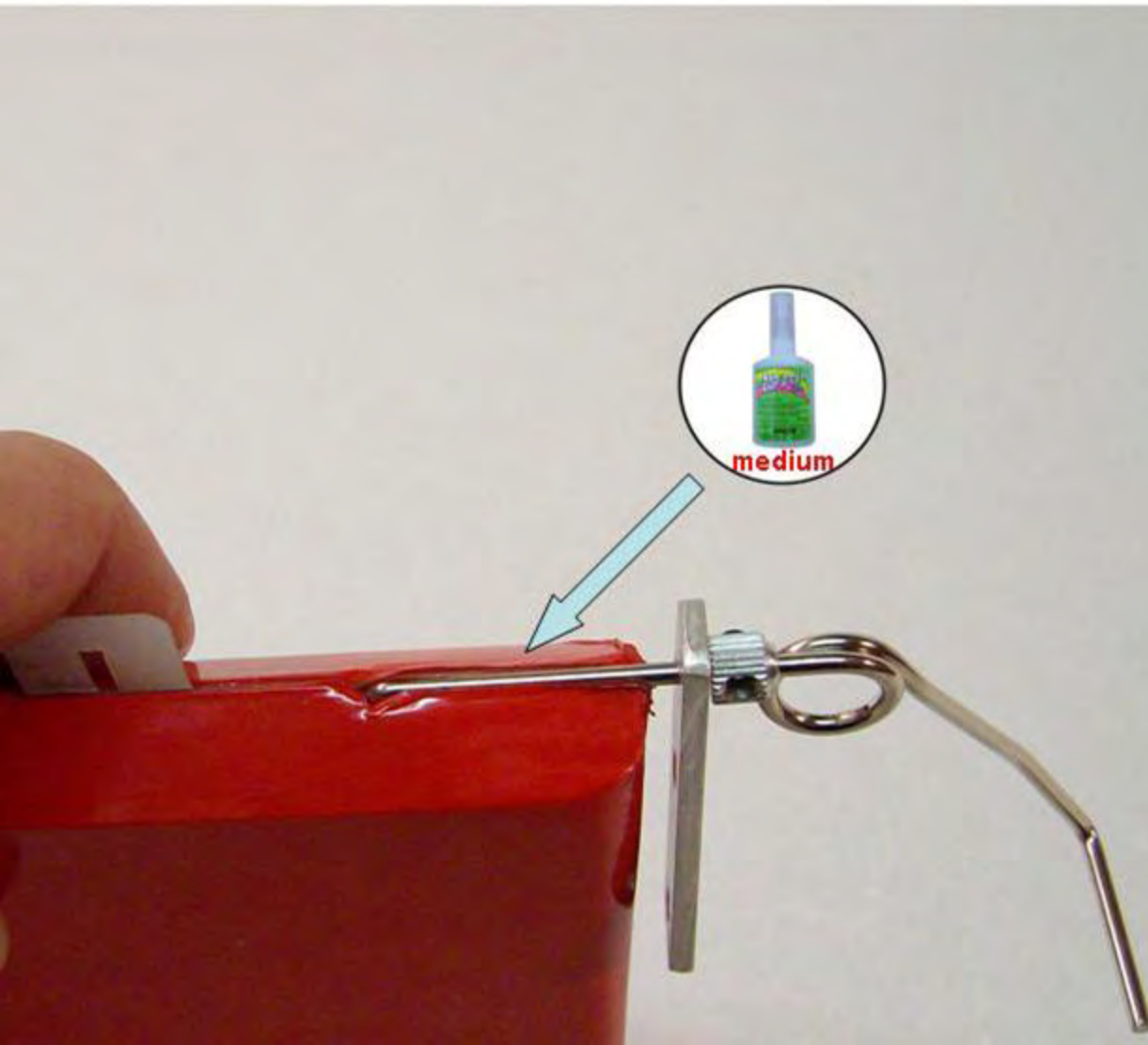
**step 016**



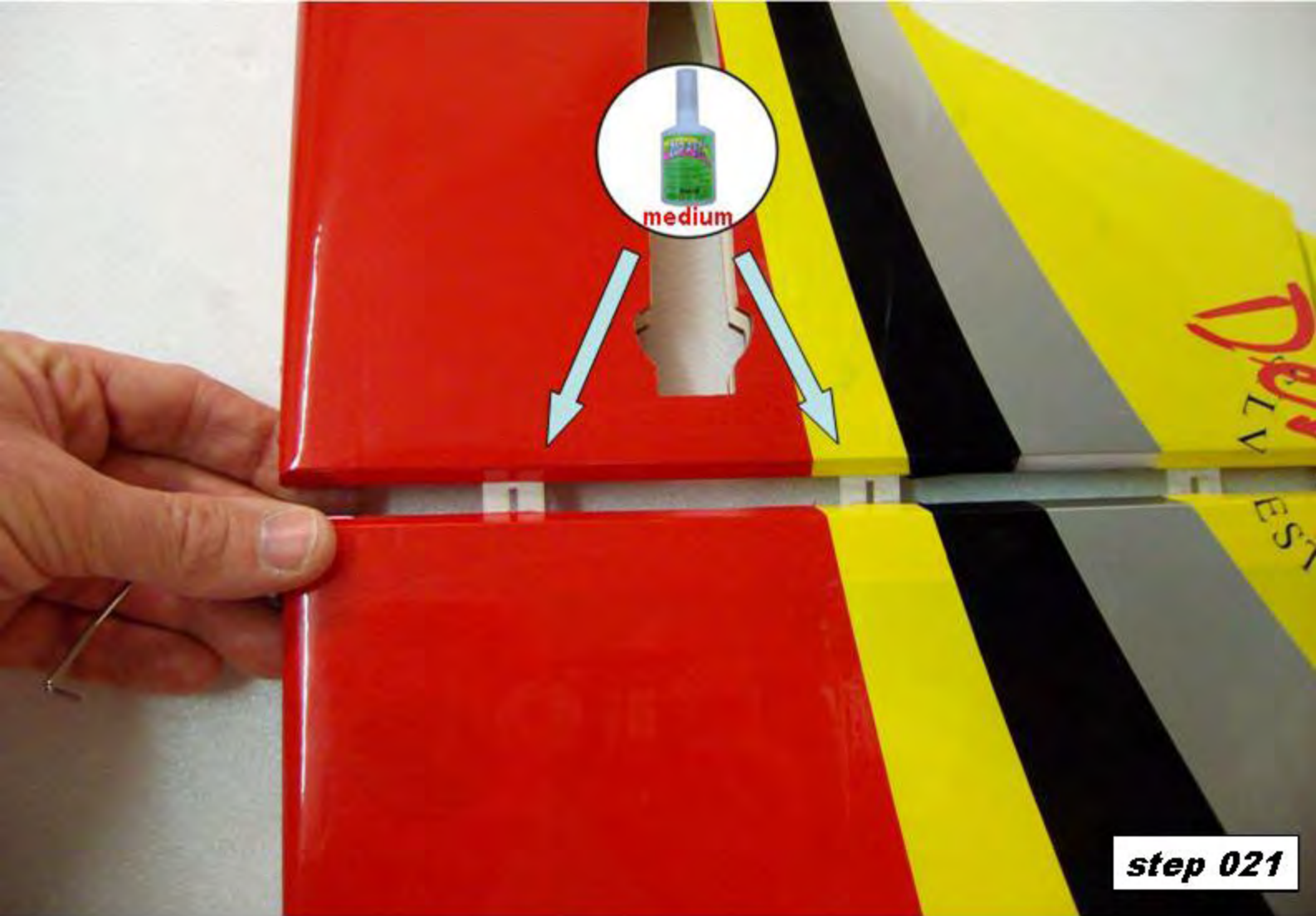




**step 019**

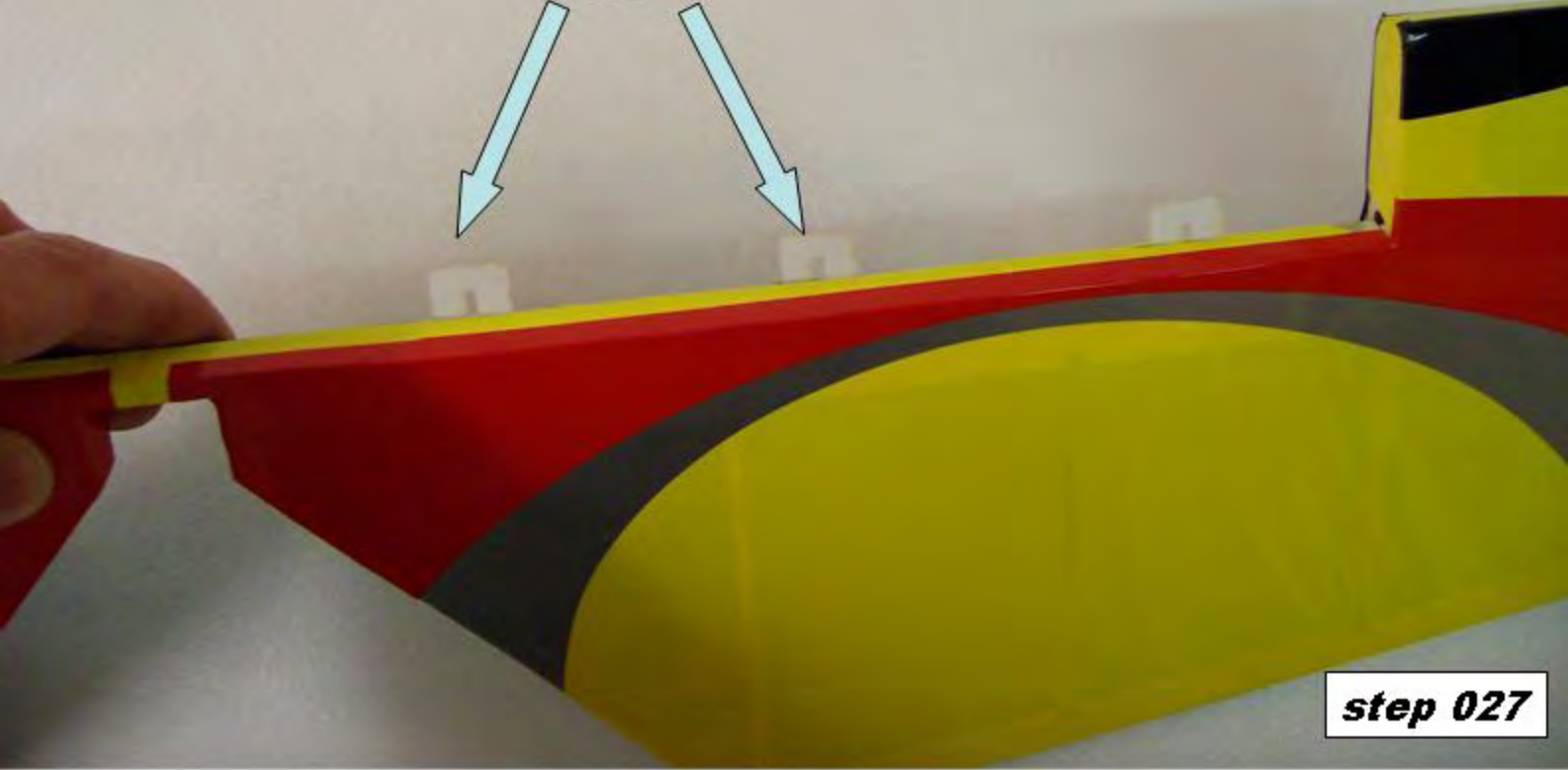


**step 020**







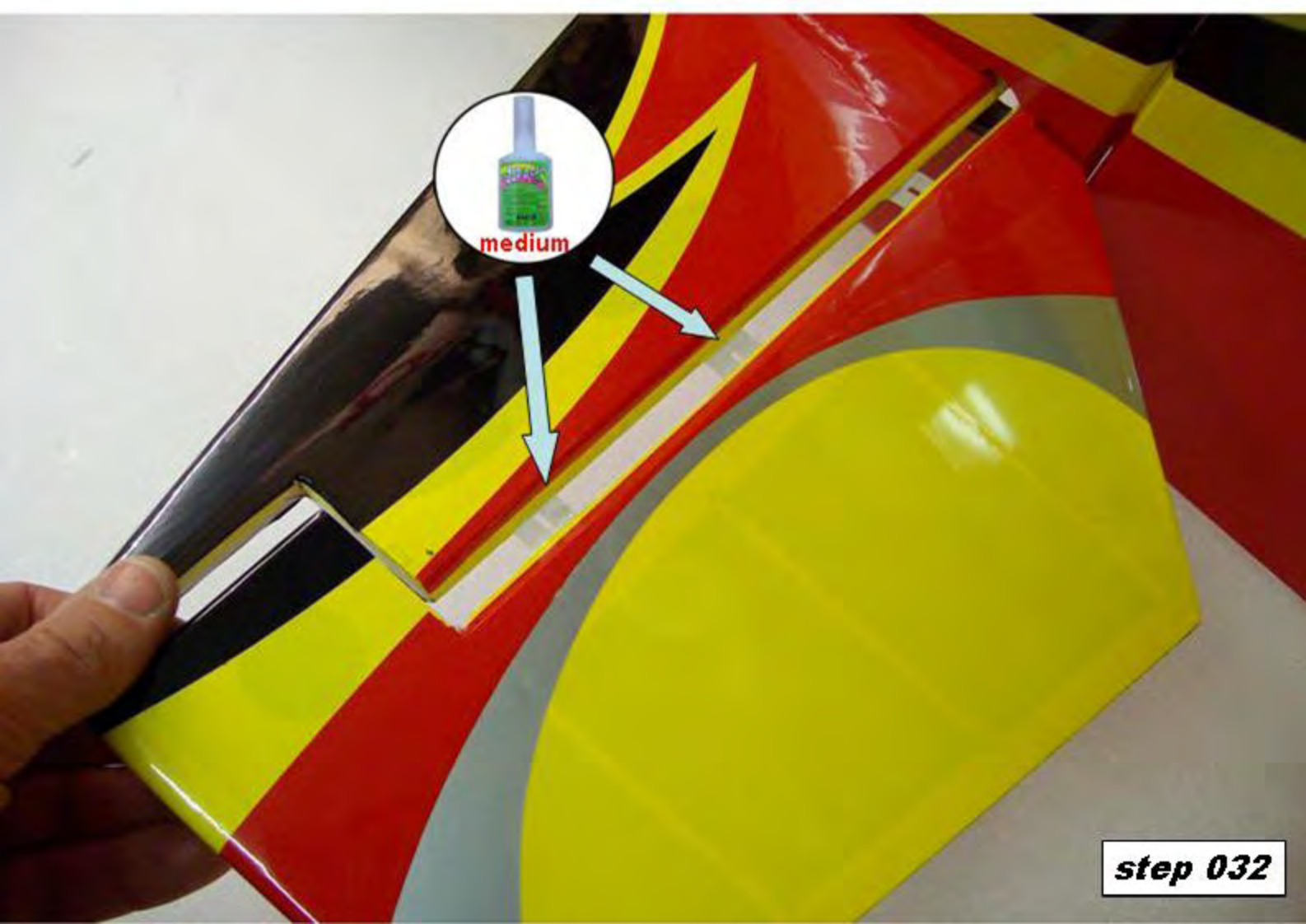


**step 027**



**step 028**

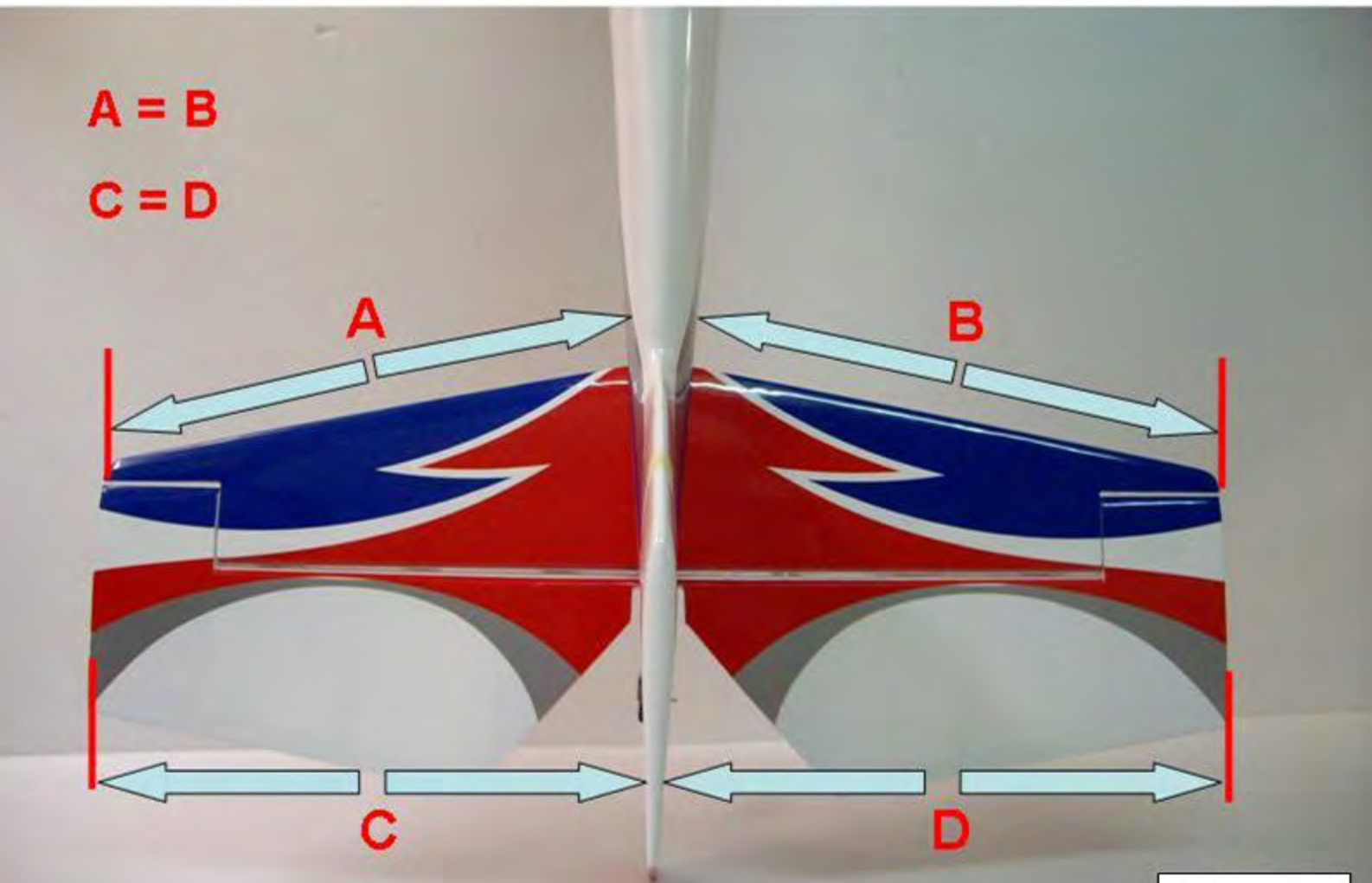








**step 033**

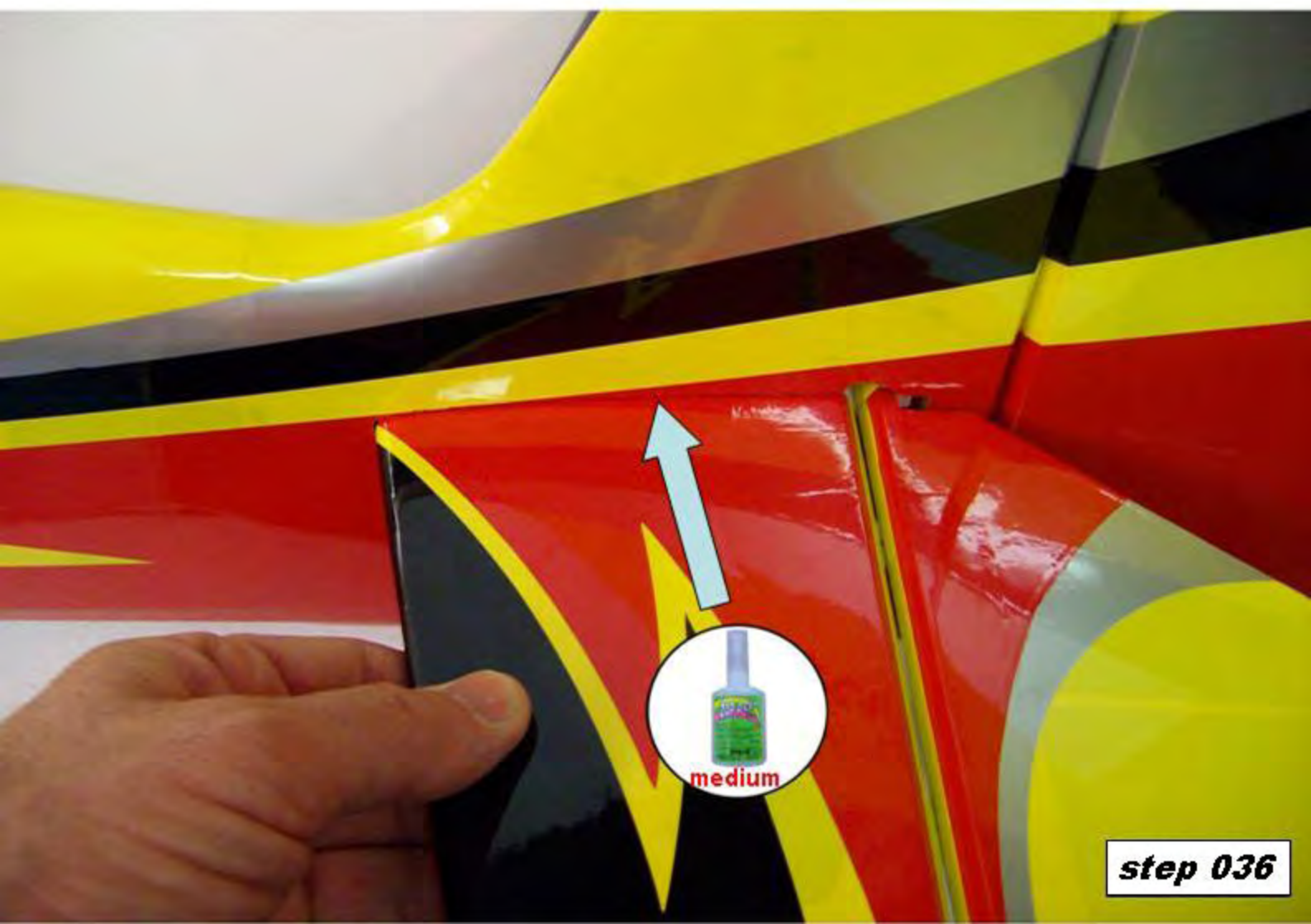


**step 034**

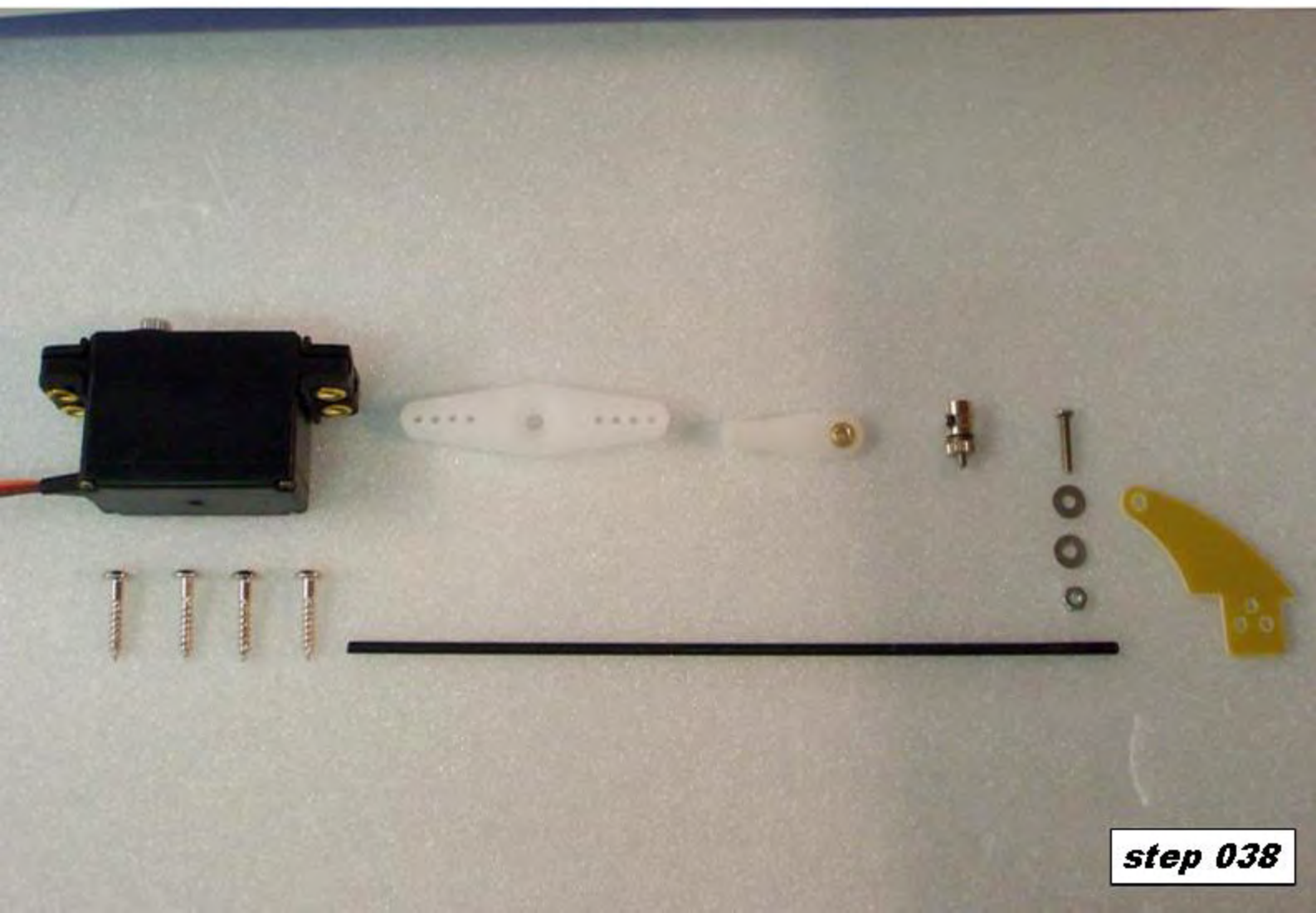
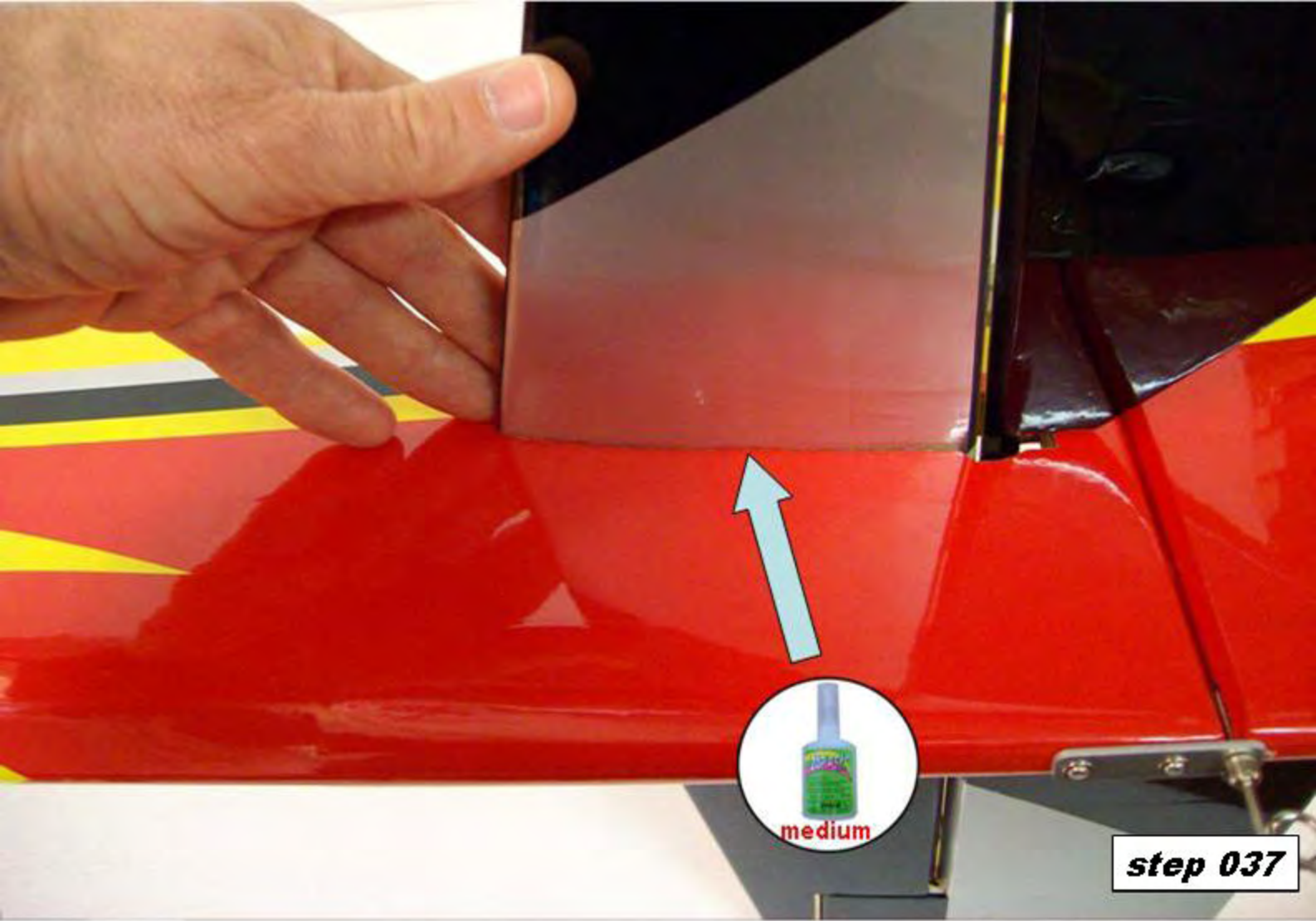
**A = B**



**step 035**



**step 036**

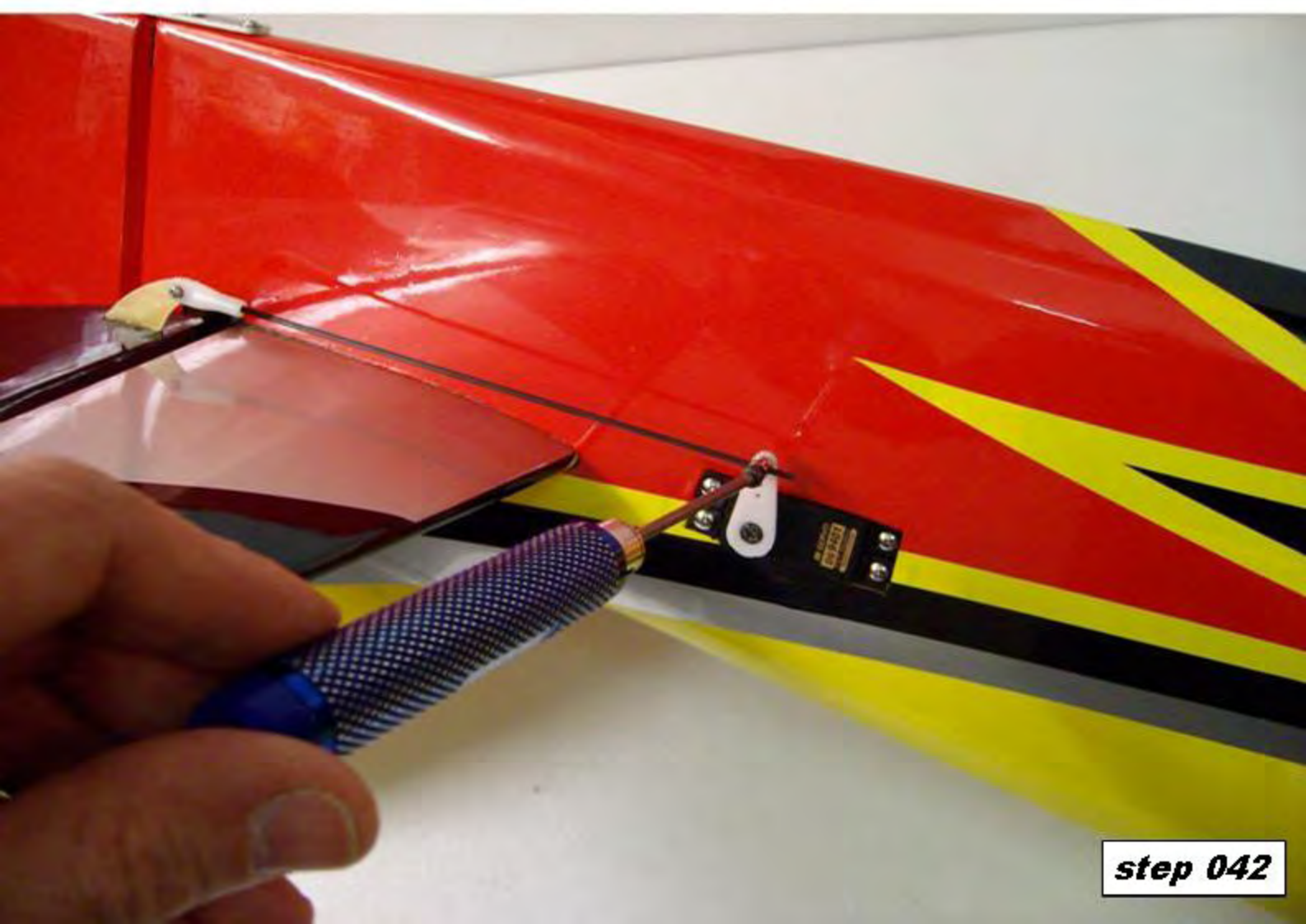


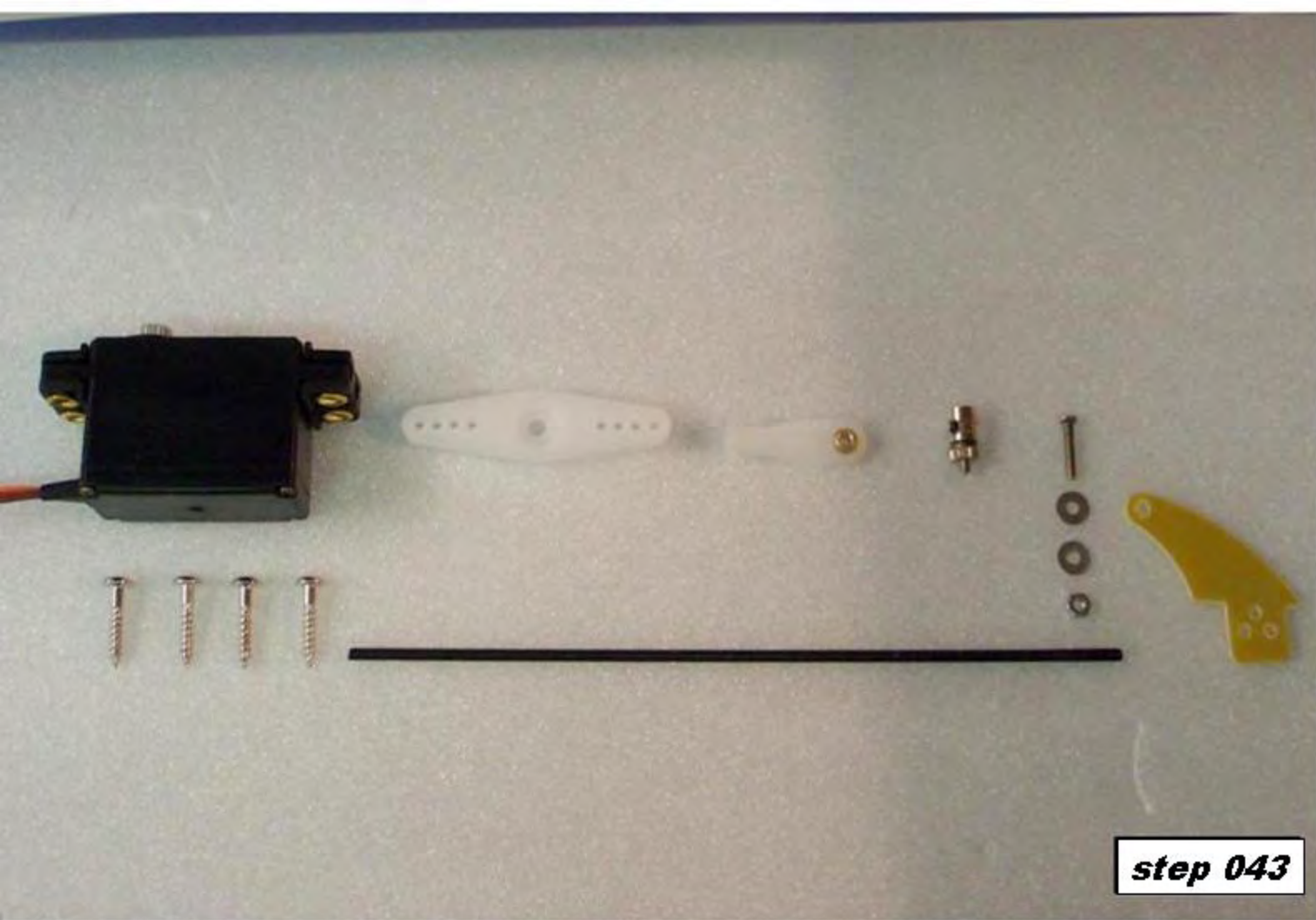


**step 039**



**step 040**

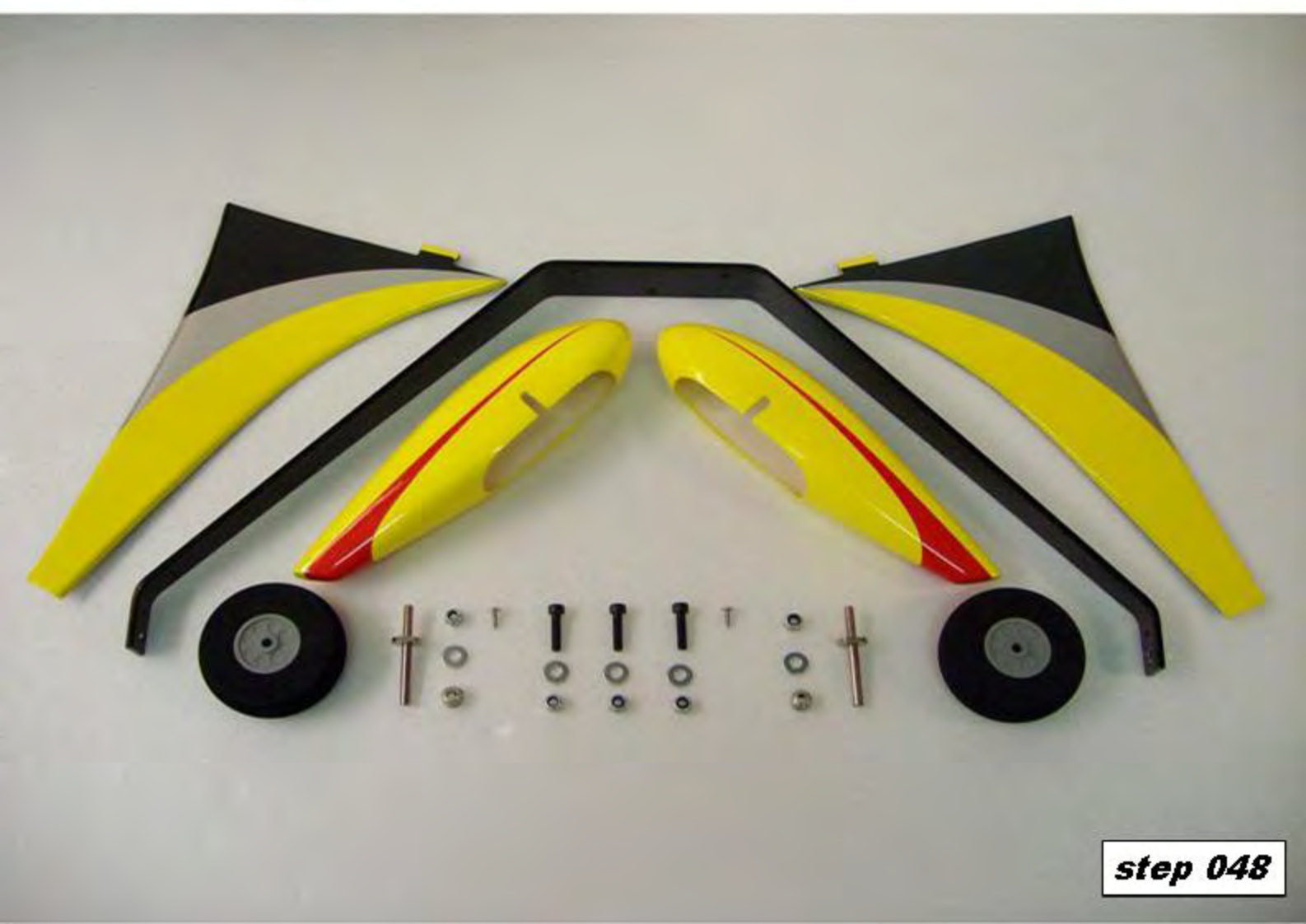






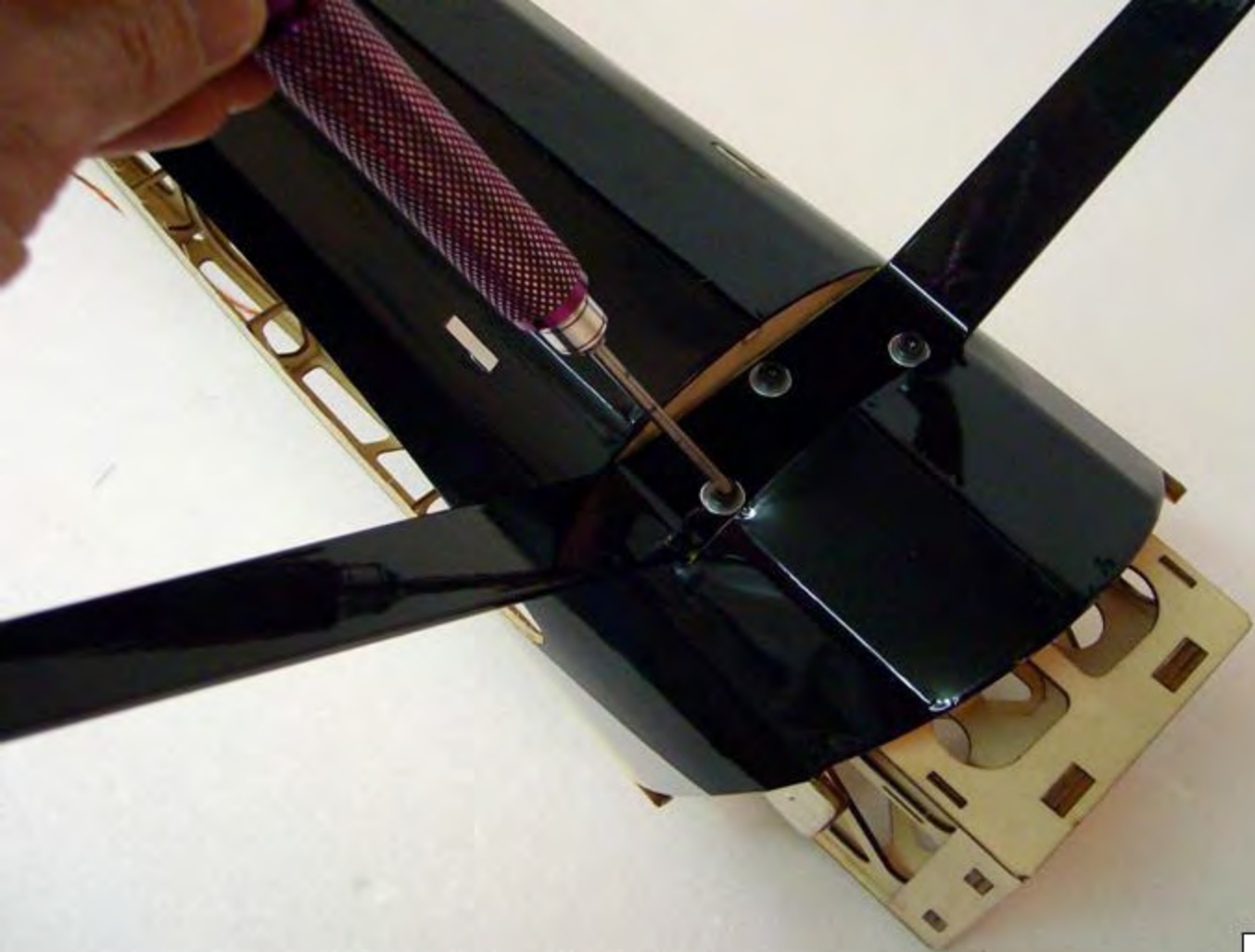


**step 047**



**step 048**

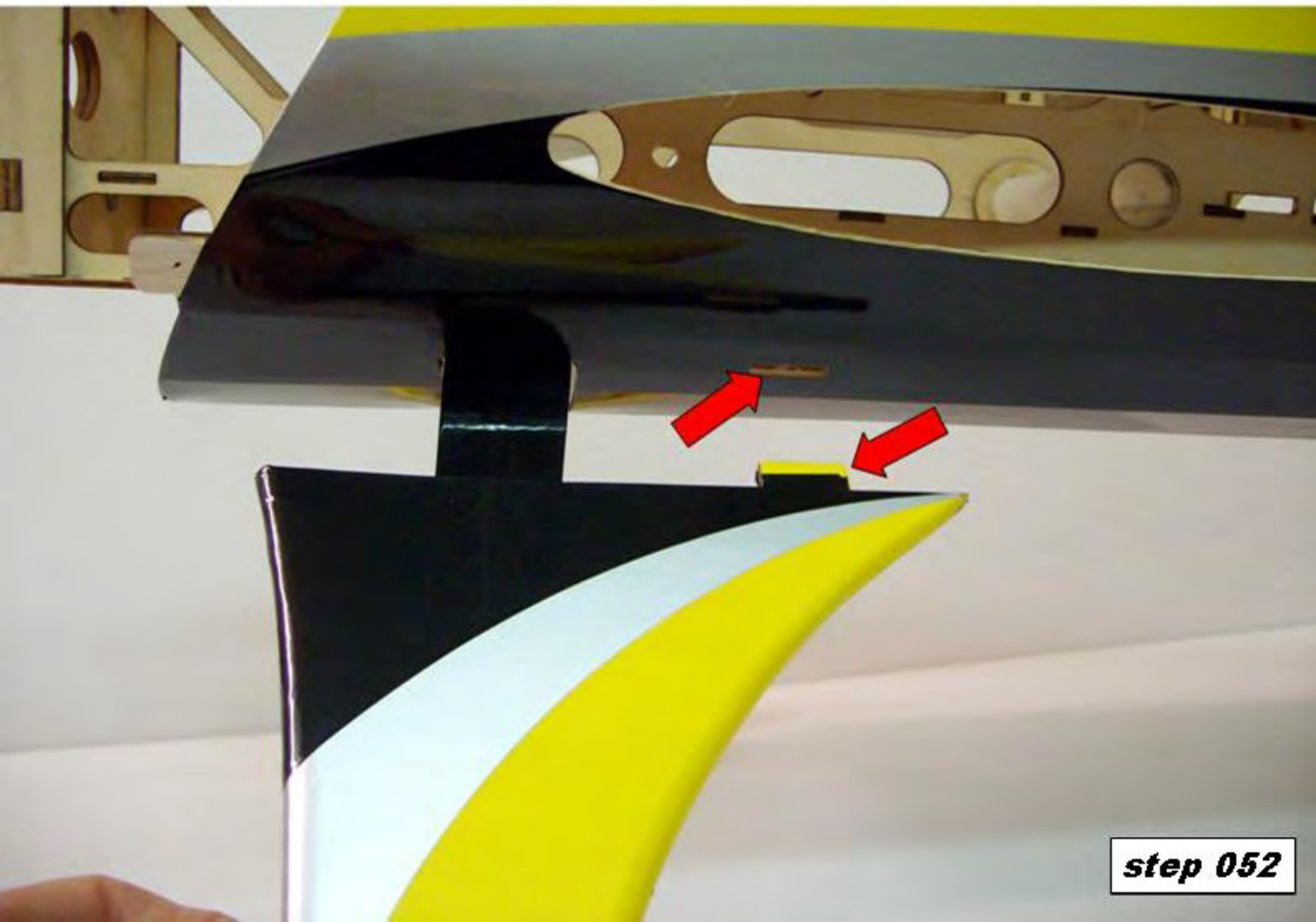
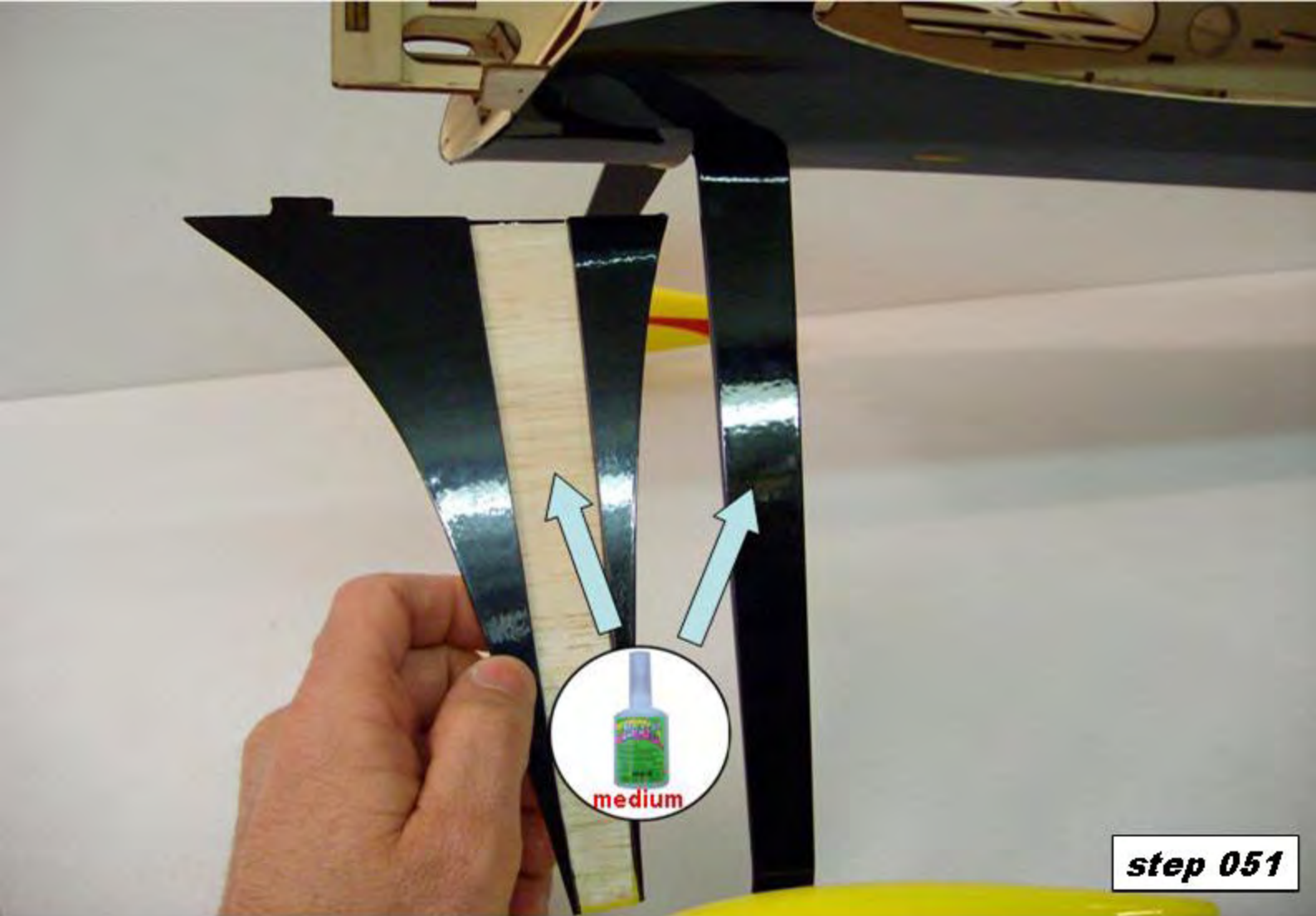




**step 049**



**step 050**





***step 053***

**For the electric engine version, followed  
by step 54 to step 75**

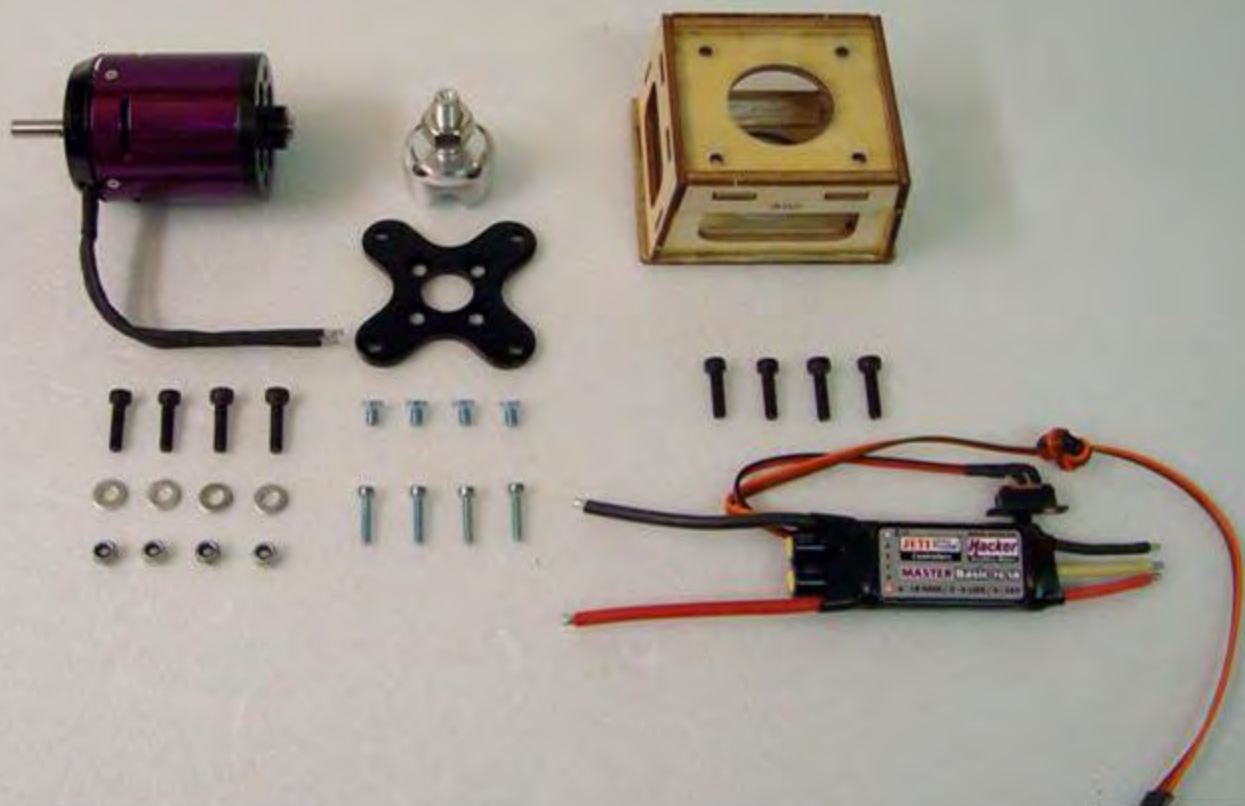
**Recomm. power set up:**

**Motor: Hacker A50-16S**

**ESC: Hacker Master 70A Bec**

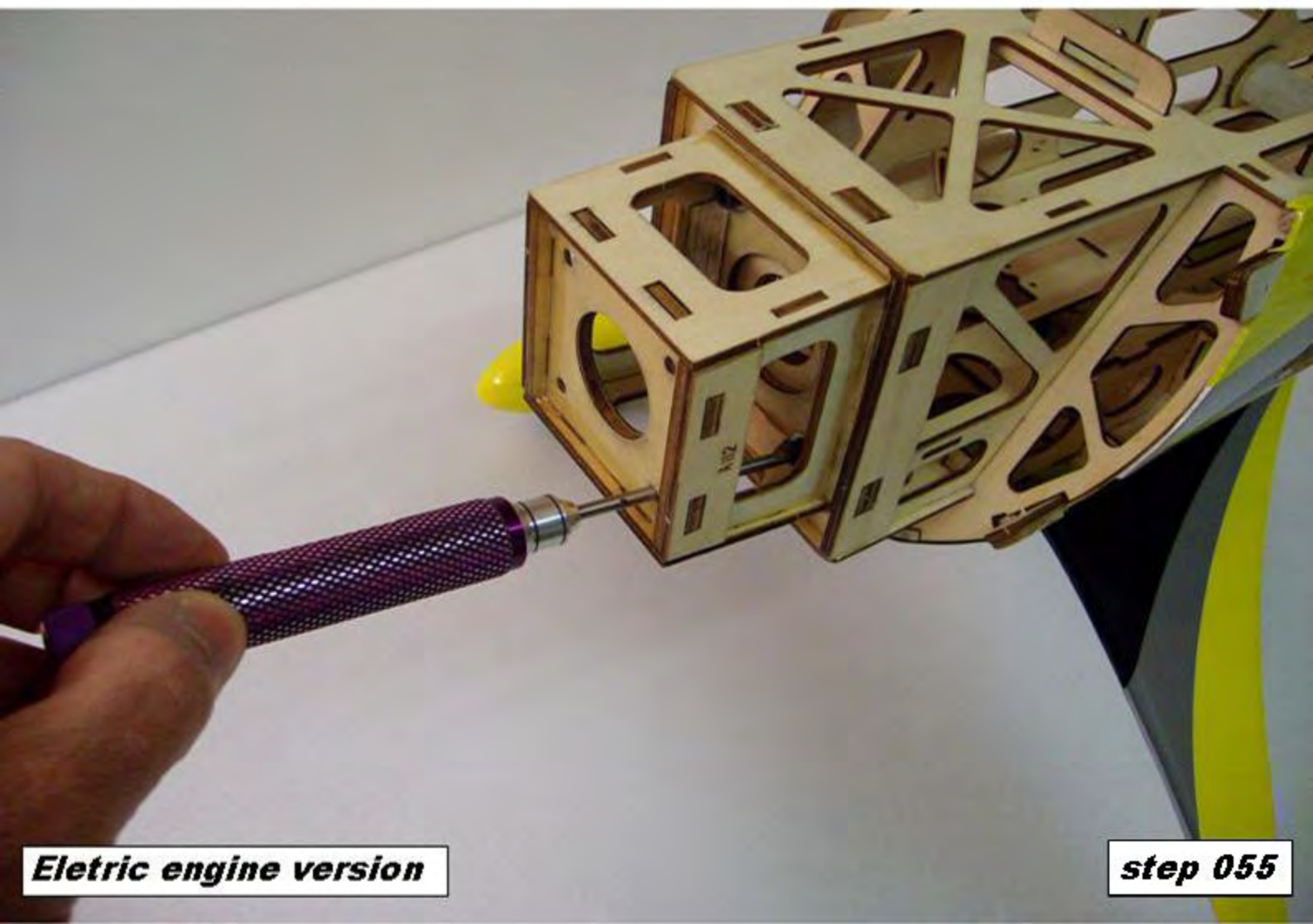
**Battery: Top Fuel 3800-6S or 4500-6S**

**Propeller: APC 16x12E or 17x8E**



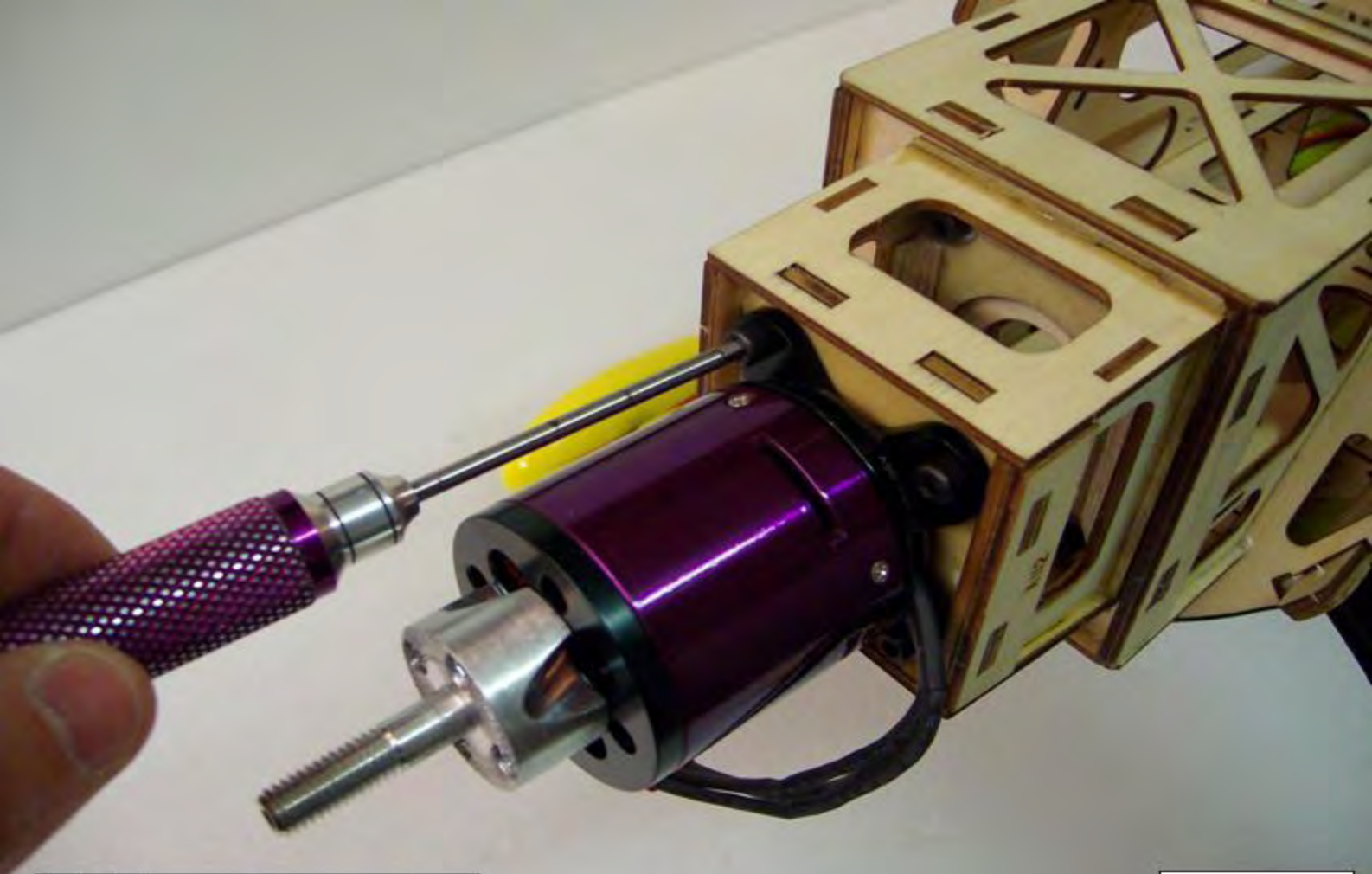
***Electric engine version***

***step 054***



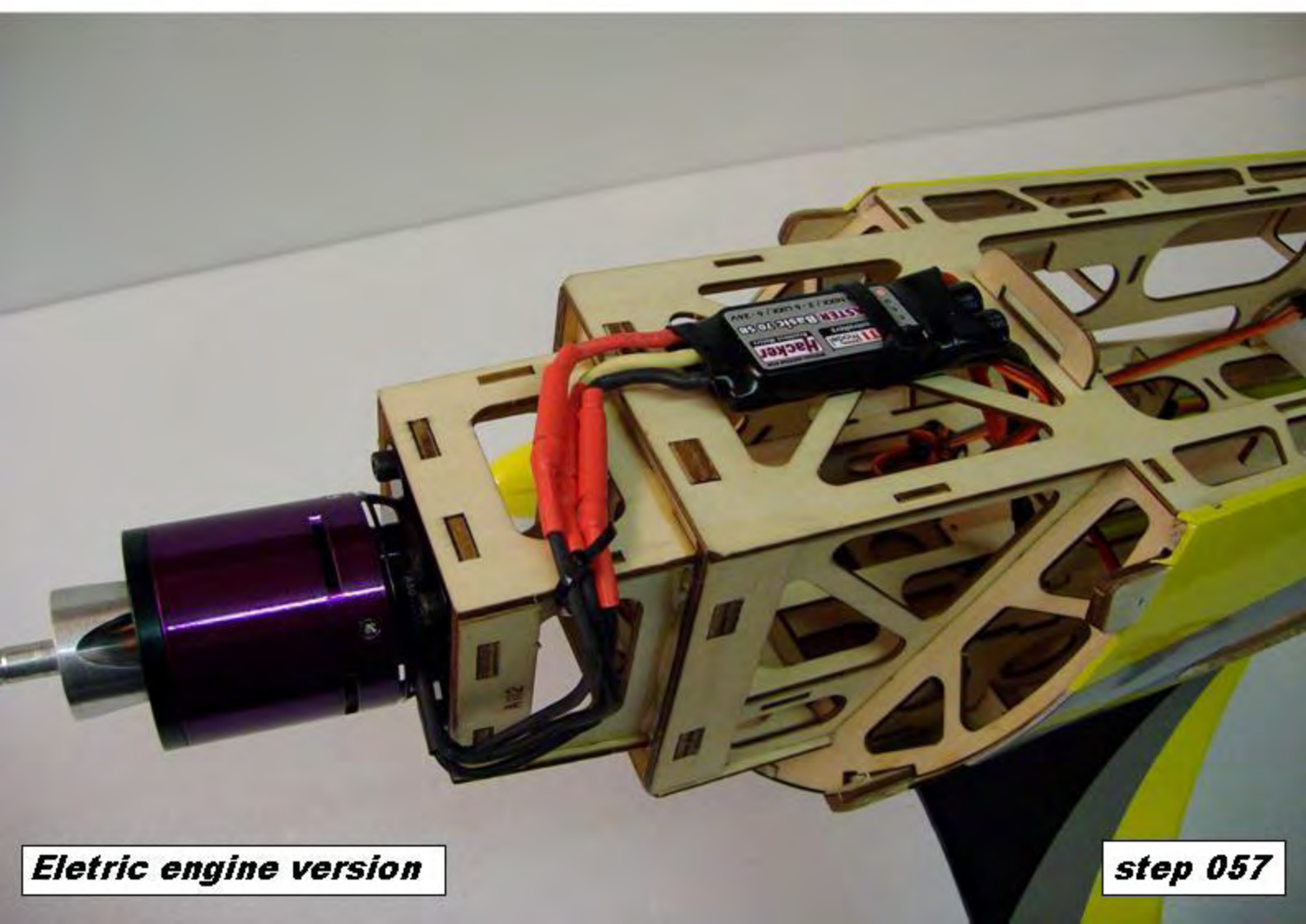
***Electric engine version***

***step 055***



***Electric engine version***

***step 056***



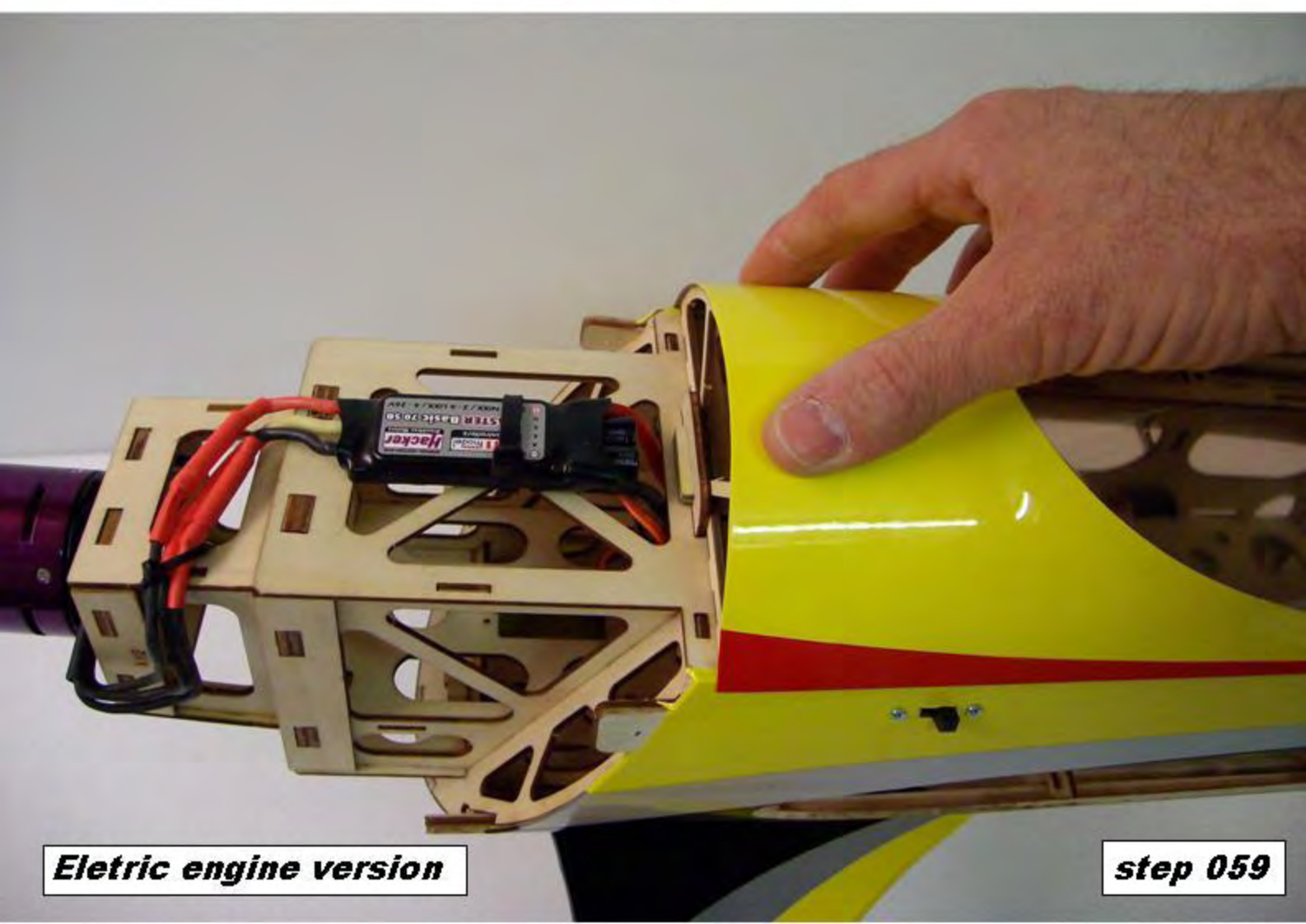
***Electric engine version***

***step 057***



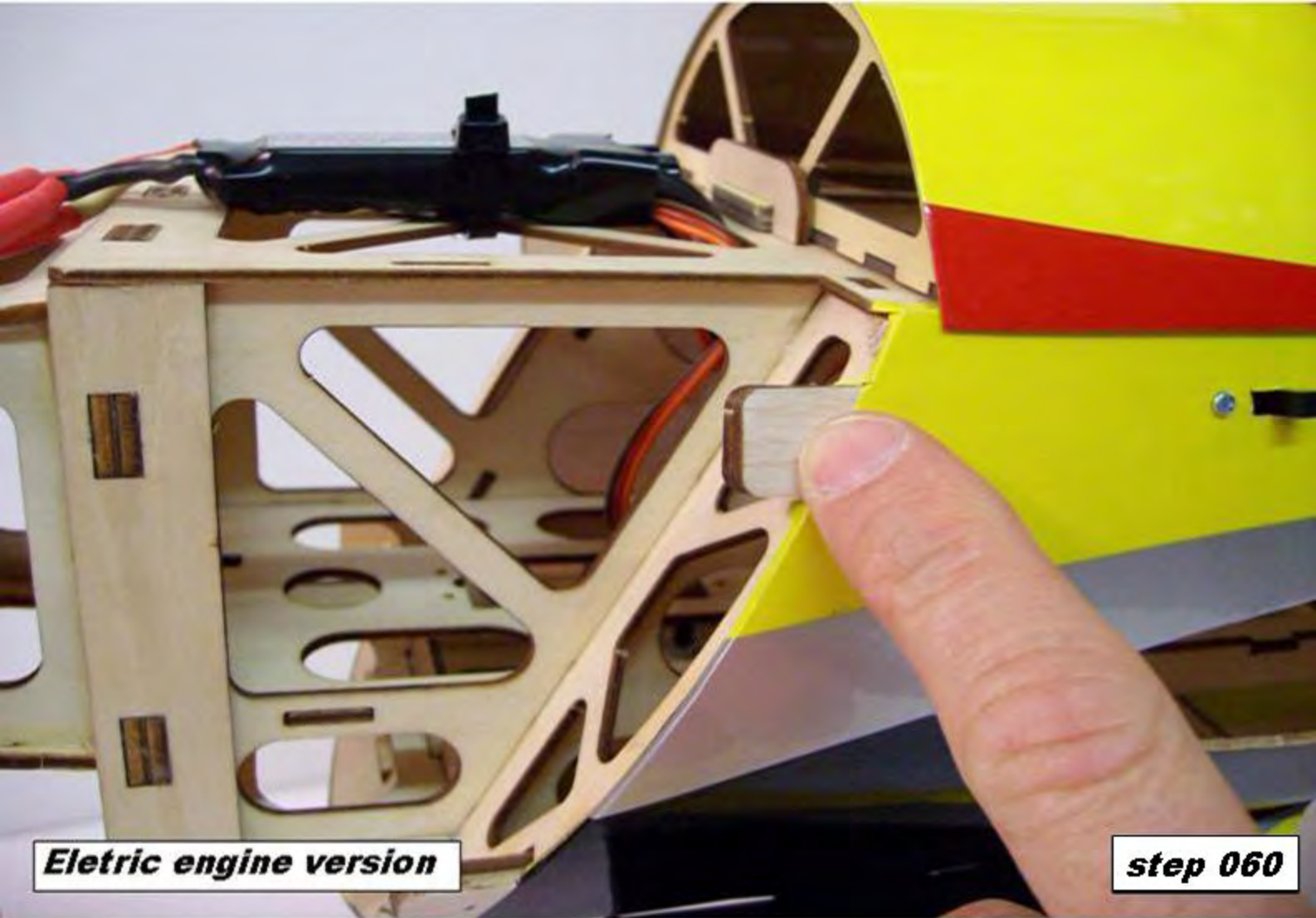
***Electric engine version***

***step 058***



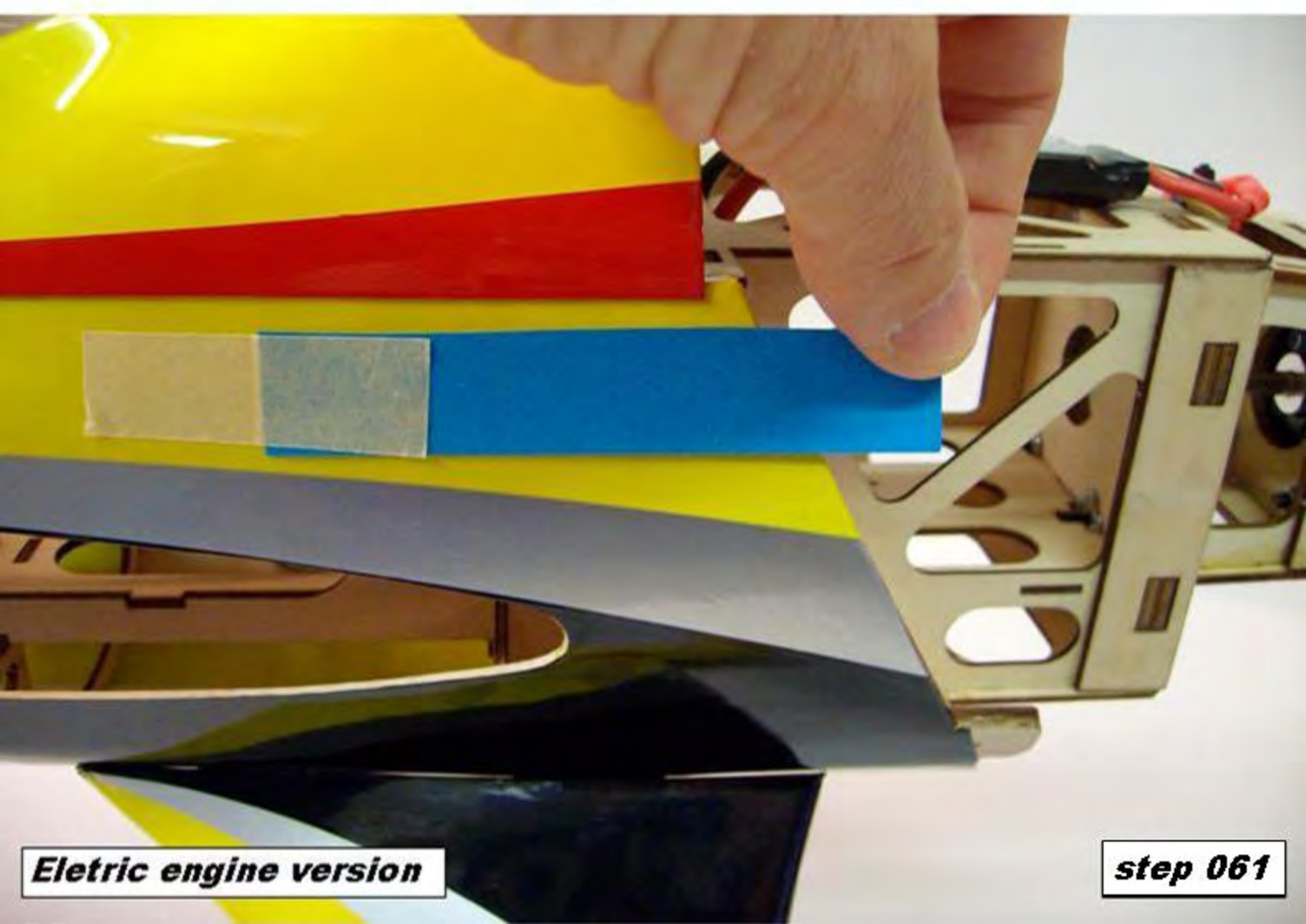
***Electric engine version***

***step 059***



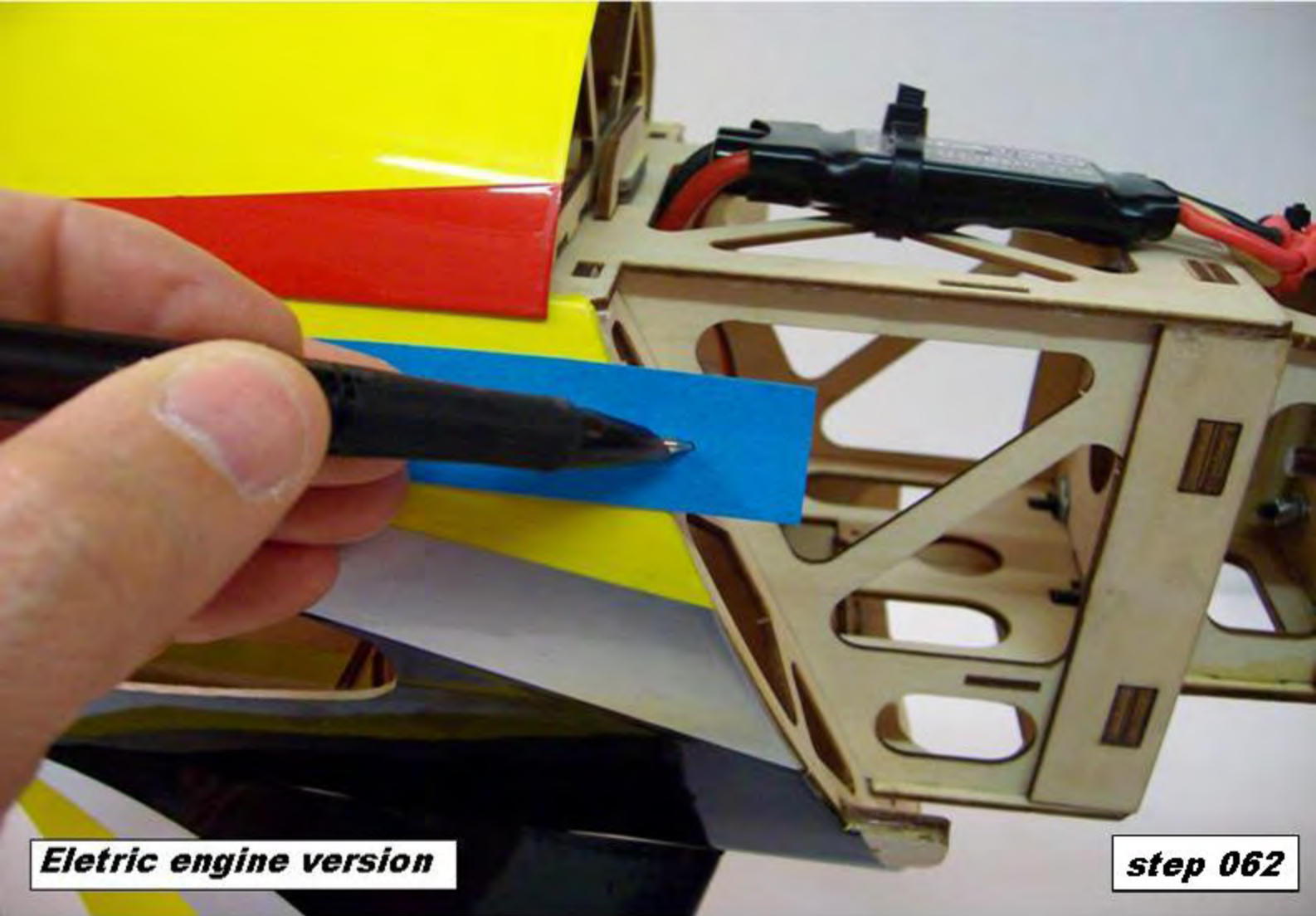
***Electric engine version***

***step 060***



***Electric engine version***

***step 061***



***Electric engine version***

***step 062***

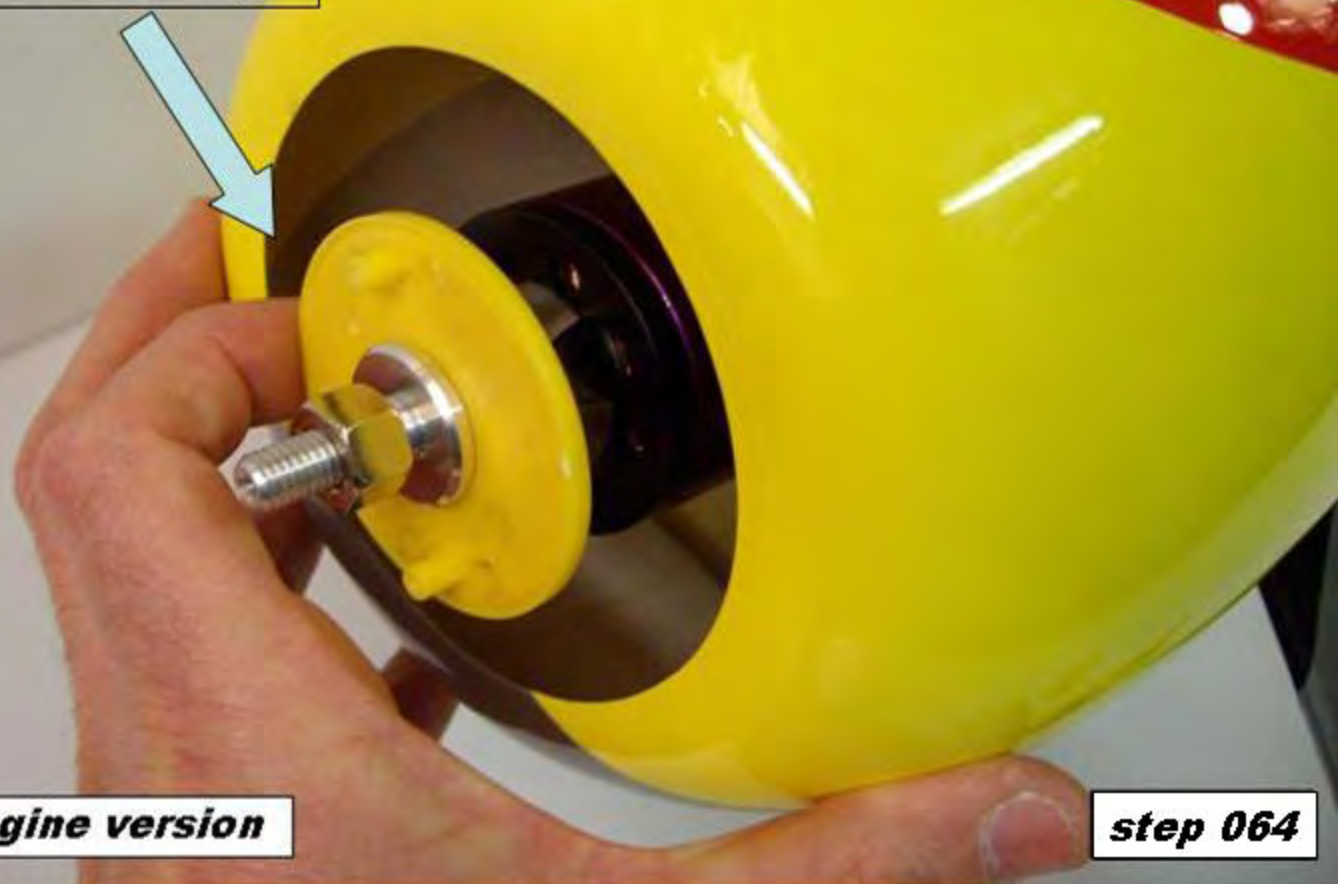


***Electric engine version***

***step 063***



**Verifying the  
correct centering**



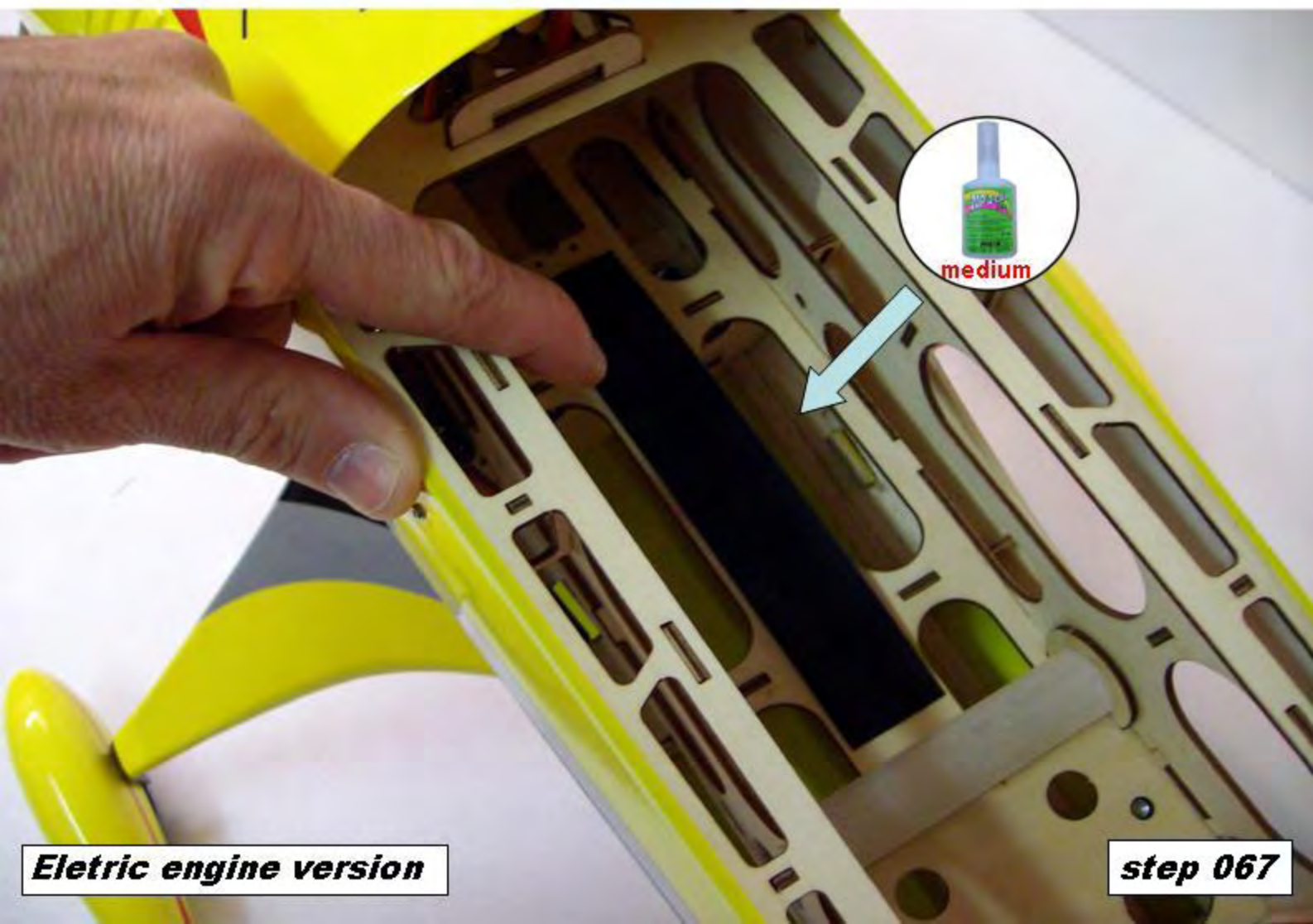
**Electric engine version**

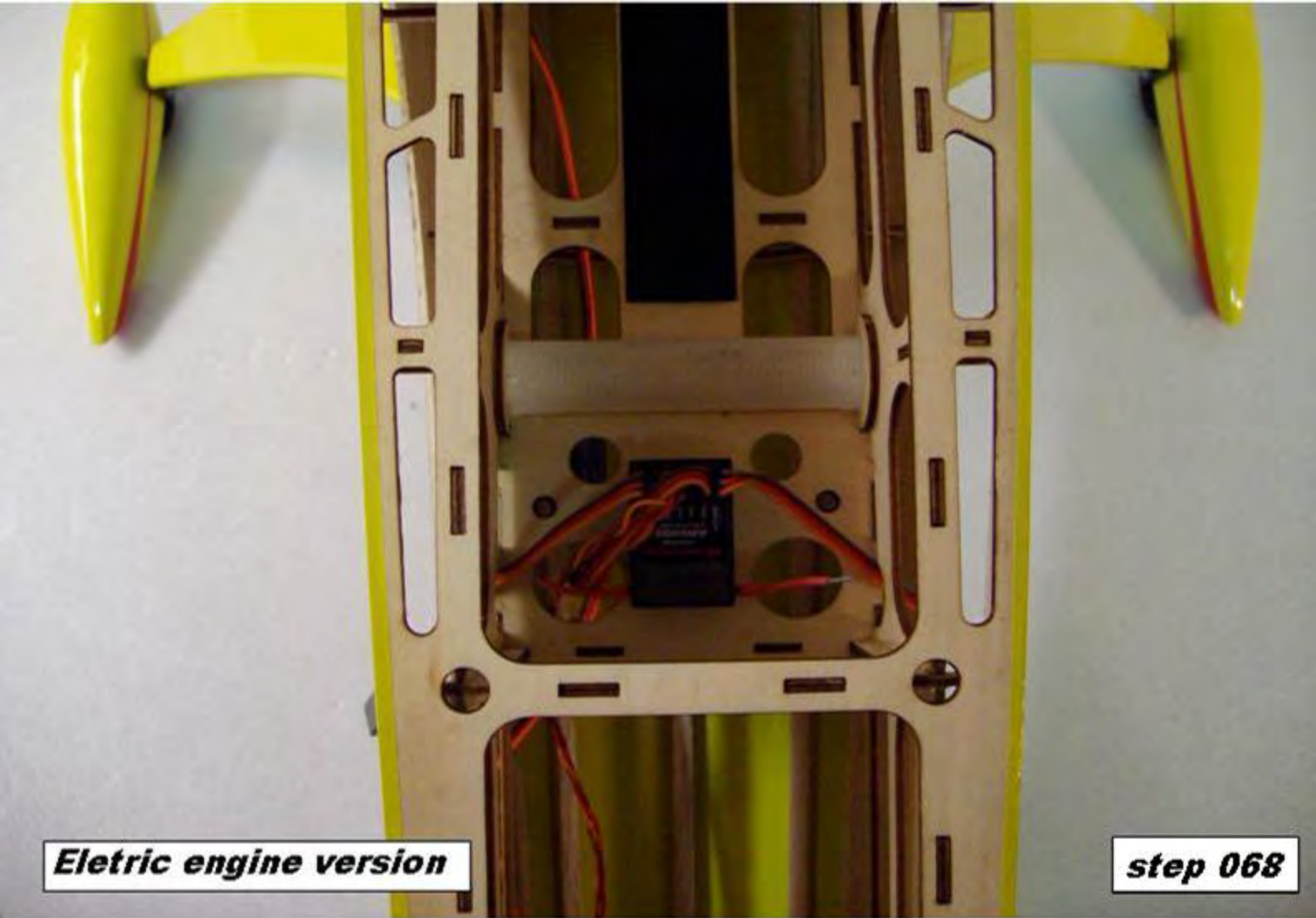
**step 064**



**Electric engine version**

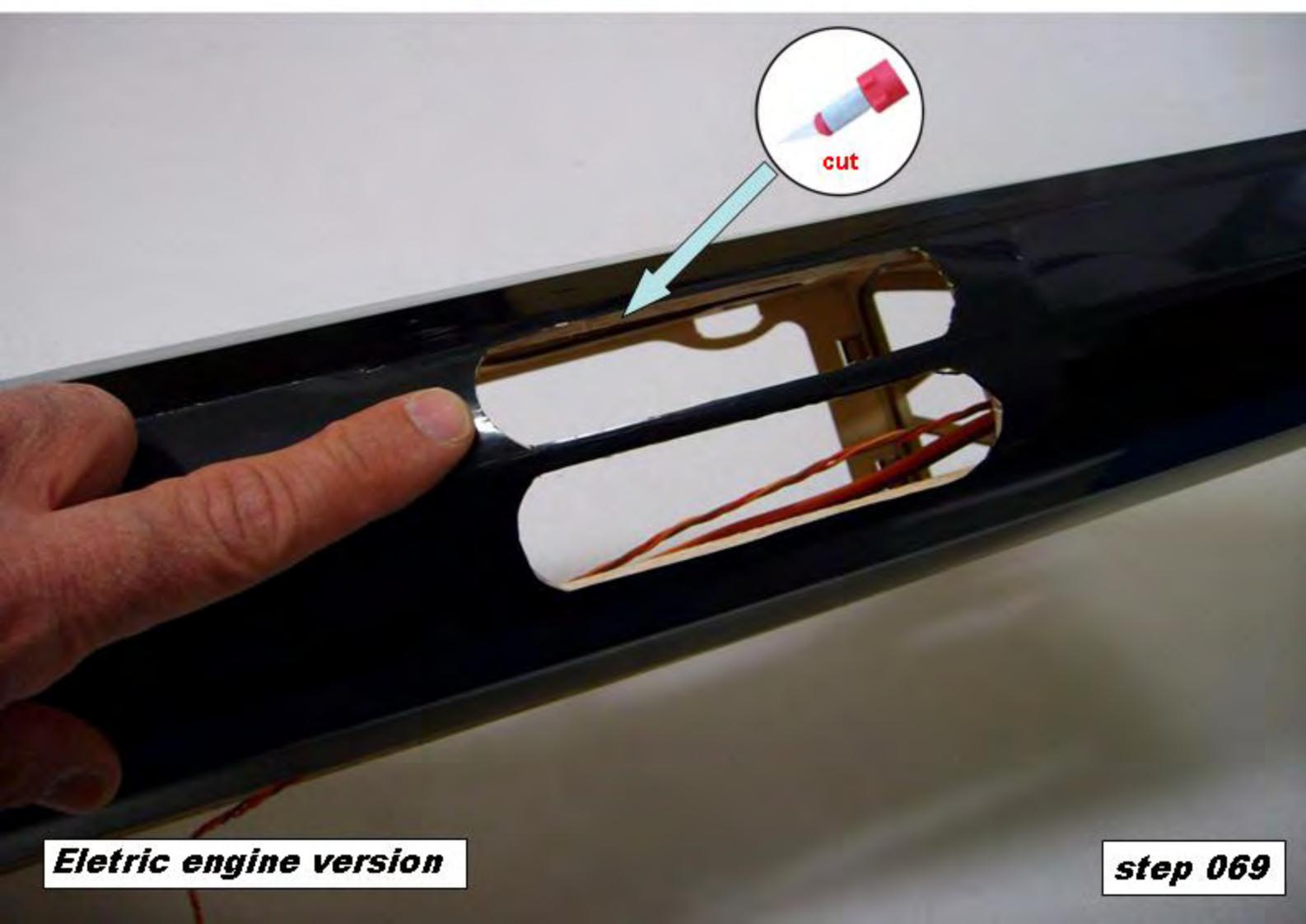
**step 065**





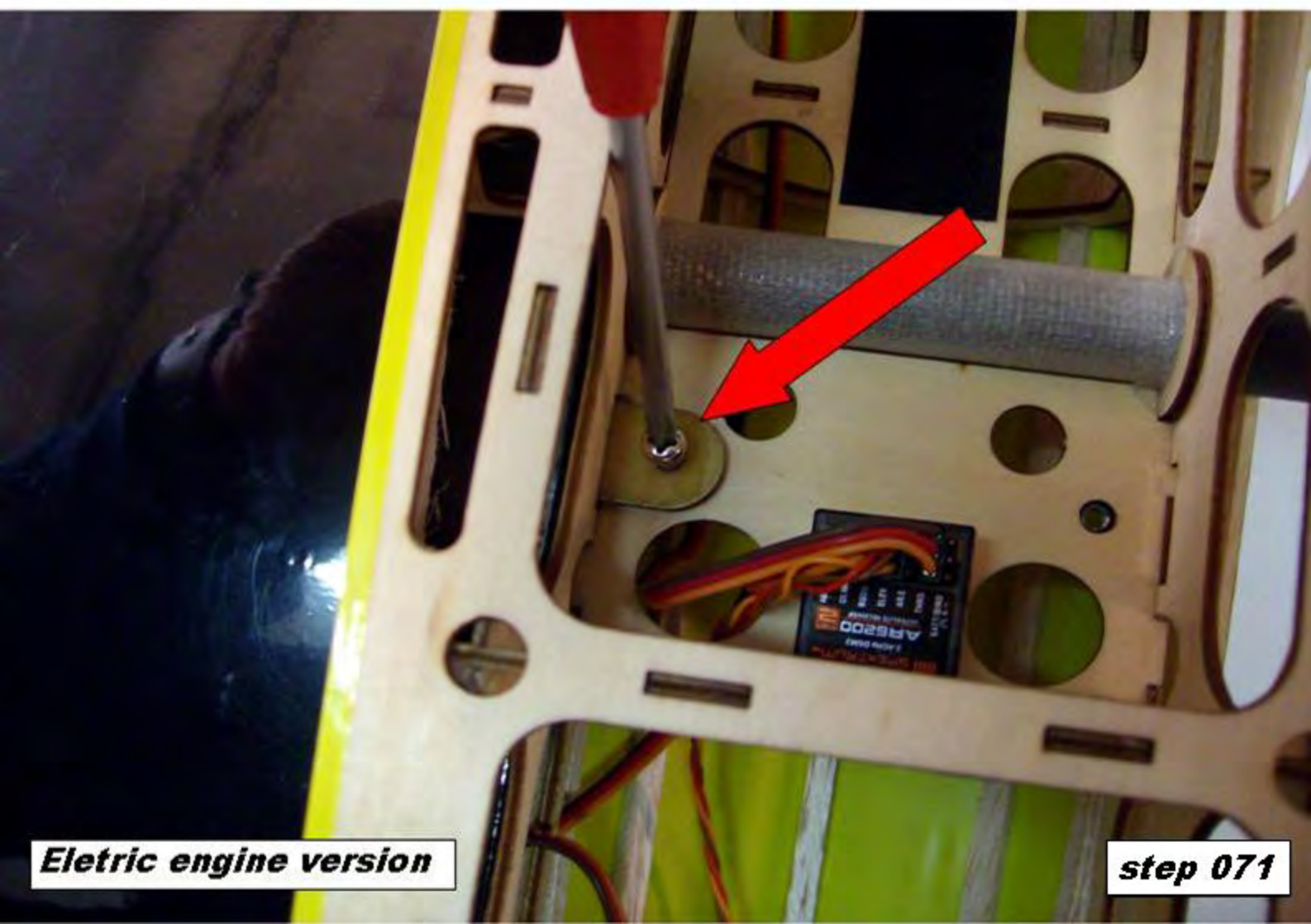
**Electric engine version**

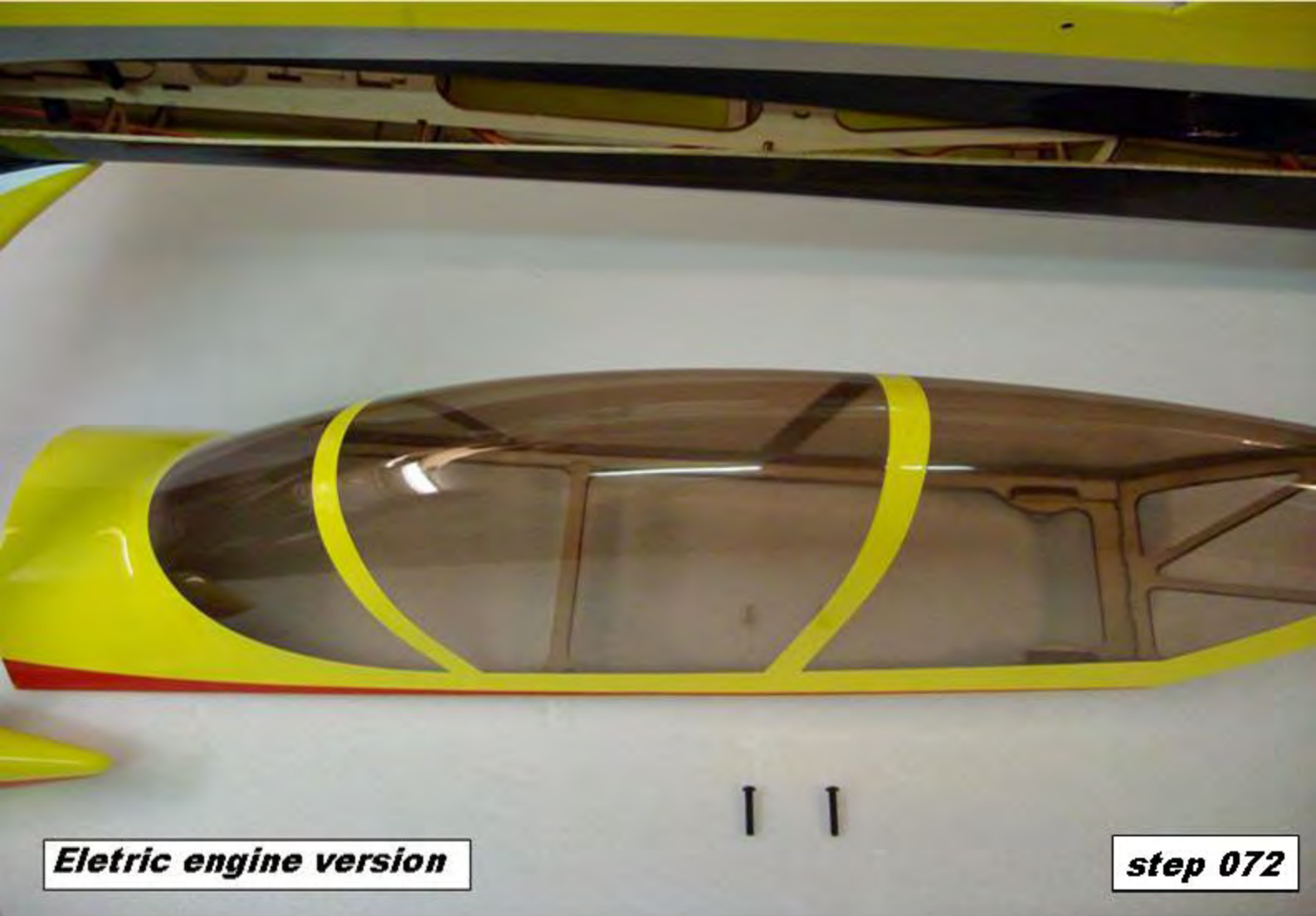
**step 068**



**Electric engine version**

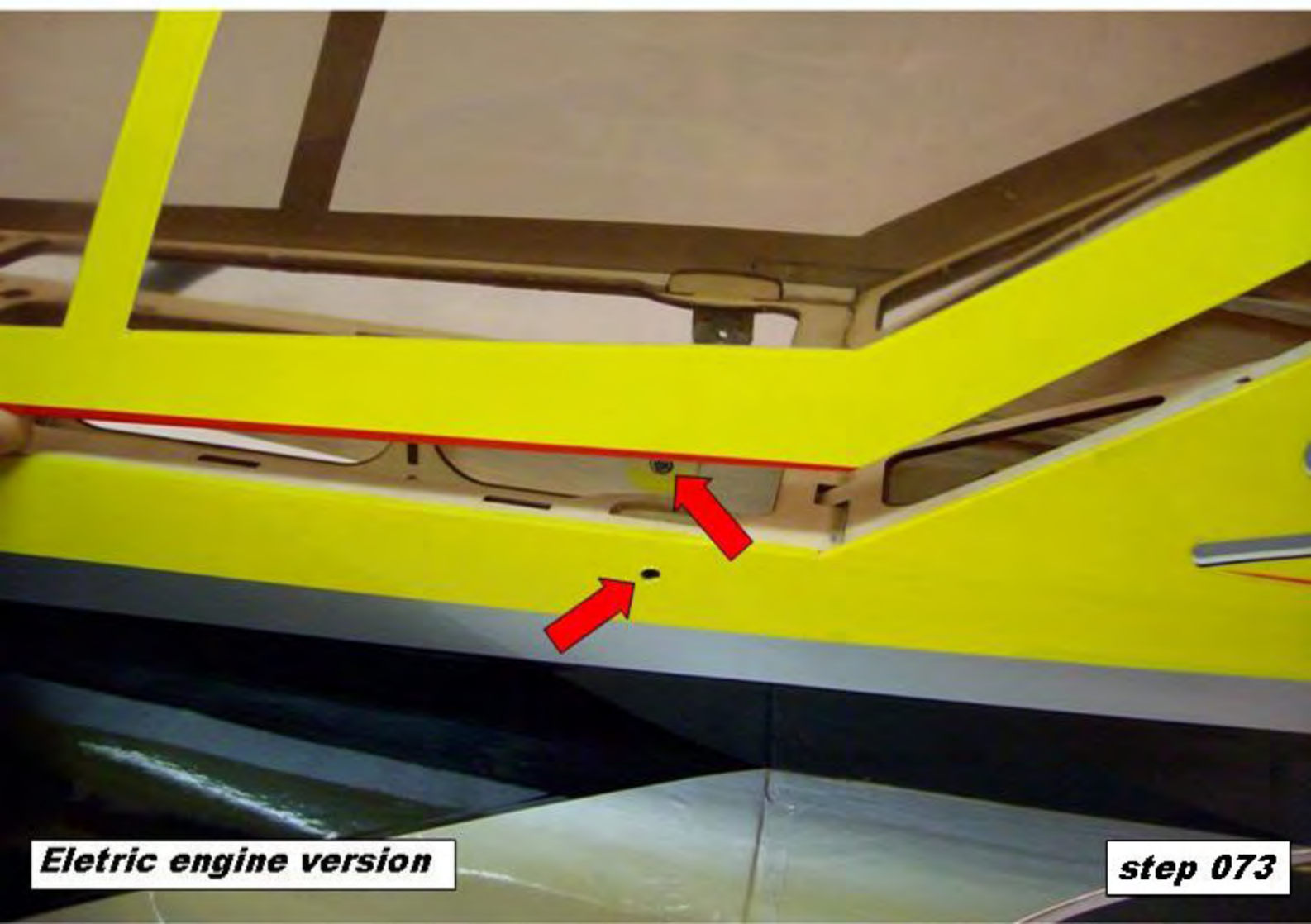
**step 069**





**Electric engine version**

**step 072**



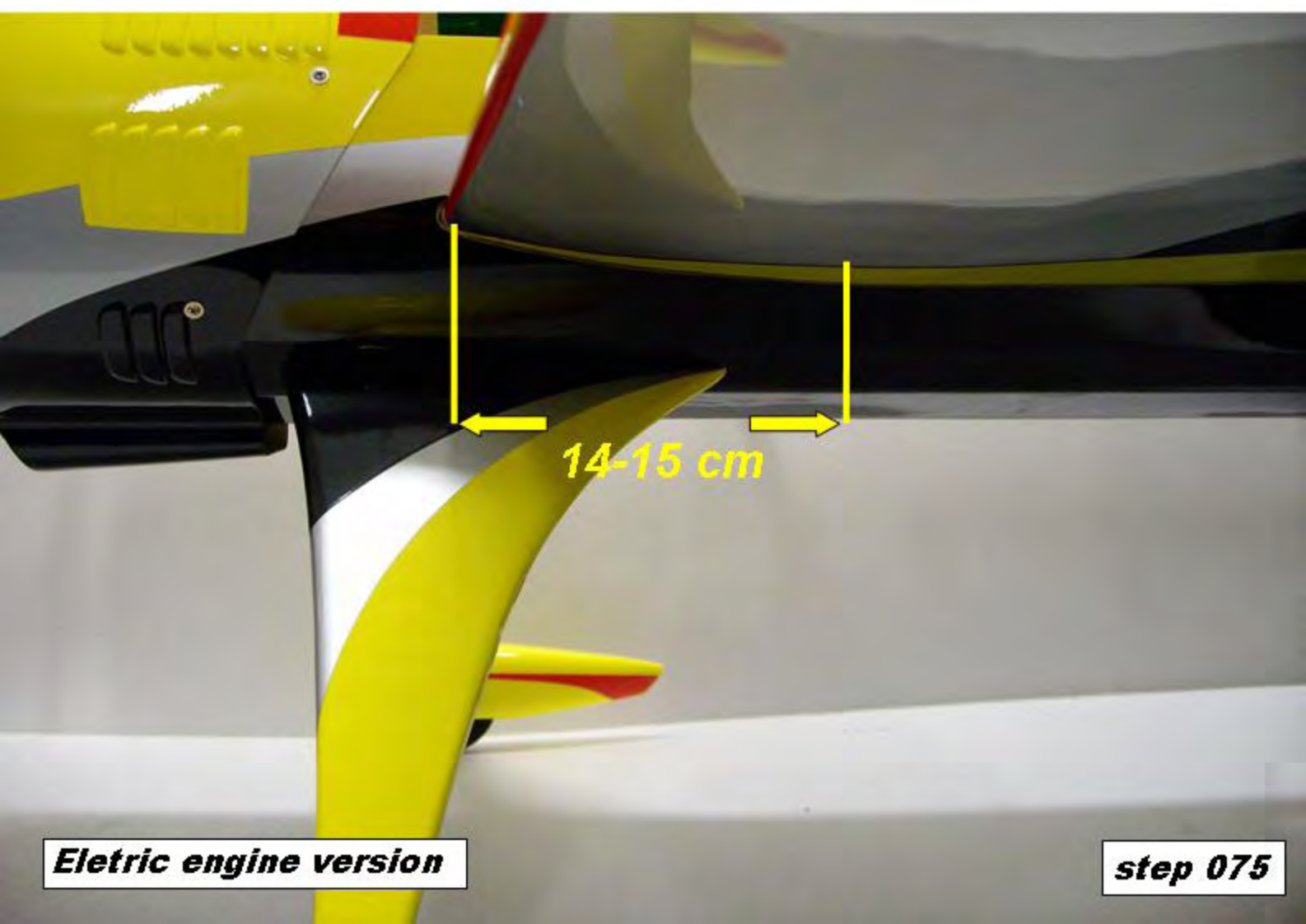
**Electric engine version**

**step 073**



**Electric engine version**

**step 074**



**Electric engine version**

**step 075**